



*2010 SIS Strategic Plan Update
Community and Environment Breakout Group
Update to the Leadership Committee*

*Bridget Merrill
Enterprise Florida, Inc.*

*Peter McGilvray
Florida Department of Transportation*

May 19, 2009



Background Information

- Two screening processes
 - SIS community and environmental screening process (SIS designation)
 - Efficient Transportation Decision-Making process (major transportation projects)

- Two new sources of information
 - Critical Lands and Waters Identification Project
 - Cooperative Conservation Blueprint



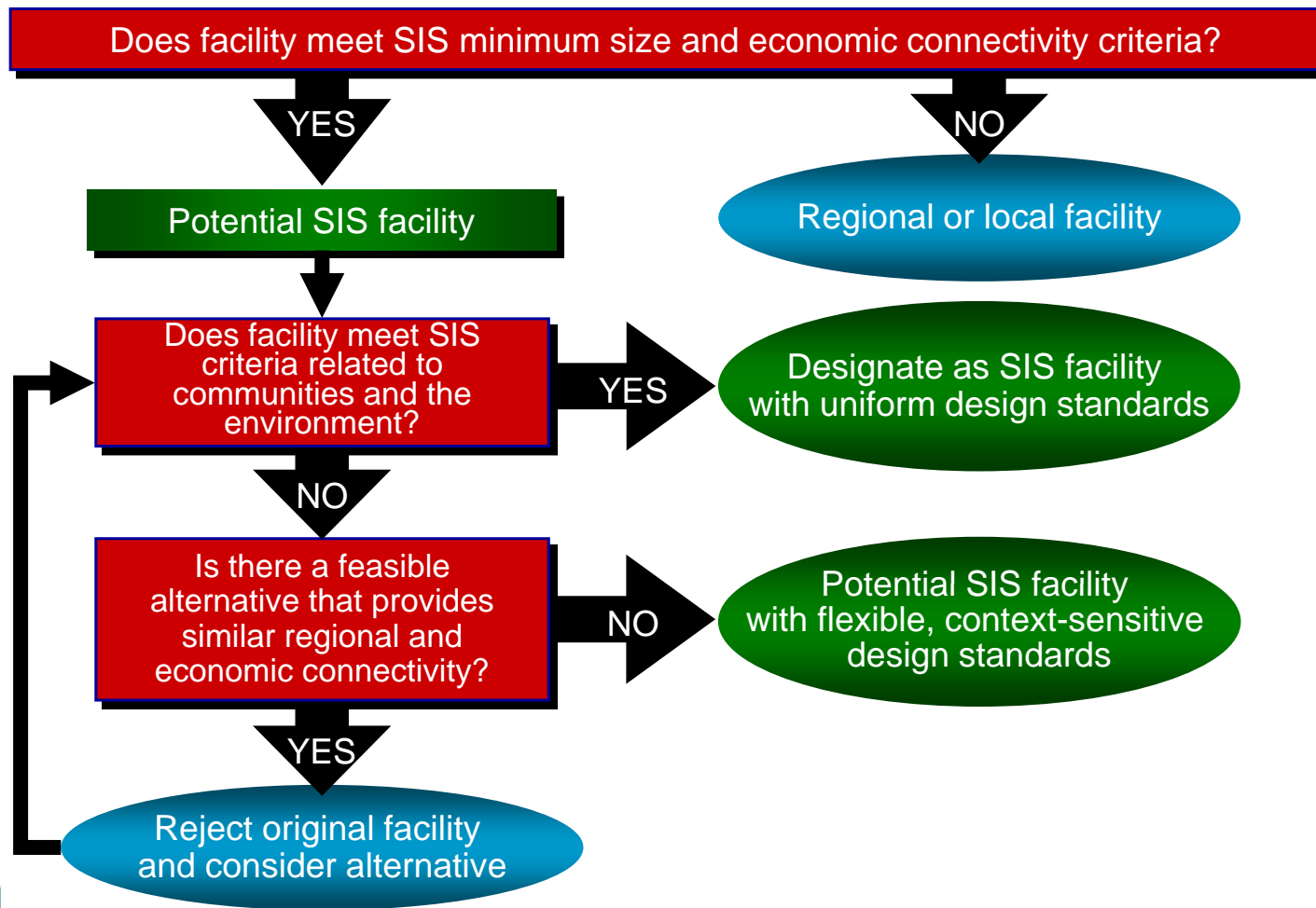
SIS Community and Environment Screening Criteria

- Purpose
 - Influence choices among facilities for designation where possible
 - Required for SIS designation
 - Not required for Emerging SIS designation but used to guide planning
 - Flag potential community and environmental impacts to guide future planning and investment decisions

- Types of criteria
 - Community character and function
 - Land use
 - Air quality
 - Natural resource lands
 - Cultural and historical sites
 - Agricultural areas



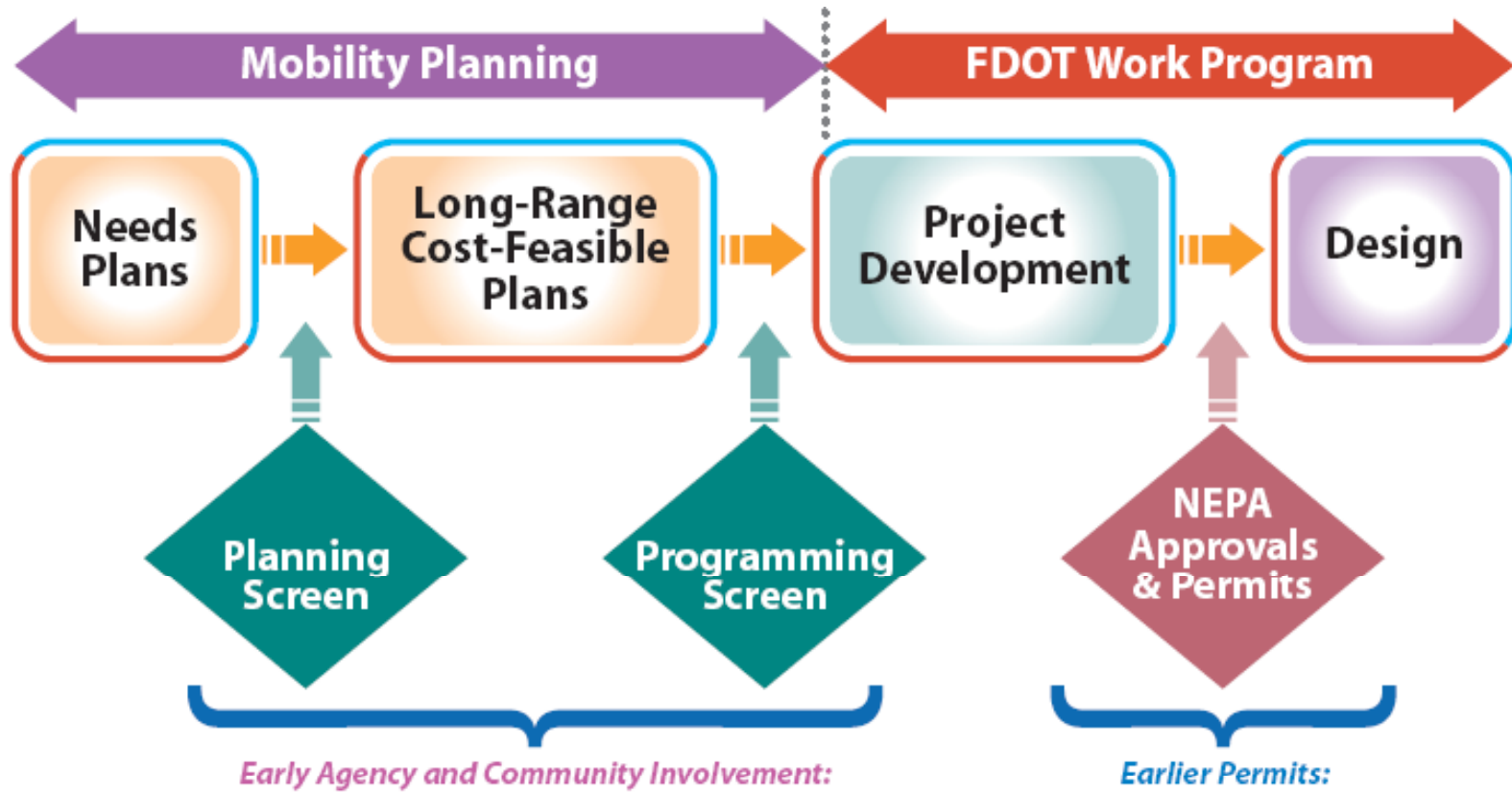
SIS Community and Environment Screening Process



Example: Redesignation of Lake Worth Tri-Rail Station Connector



ETDM Process Today



Agencies Participating in the ETDM Process

More than 30 state, tribal, federal, and local agencies participate in the ETDM Process

Federal Highway Administration (FHWA)
Federal Transit Agency (FTA)
US Army Corp of Engineers (USACE)
US Coast Guard (USCG)
US Environmental Protection Agency (USEPA)
USDA Natural Resources Conservation Service
US Fish & Wildlife Service (USFWS)
US Forest Service (USFS)
National Marine Fisheries Service (NMFS)
National Park Service (NPS)
Seminole Tribe
Miccosukee Tribe
Florida County Governments
**26 Metropolitan Planning
Organizations**
11 Regional Planning Councils

Florida Department of Environmental
Protection (FDEP)
Florida Department of Community Affairs
(DCA)
Florida Department of Transportation (FDOT)
FL Department of Agriculture and Consumer
Services (FDACS)
Florida Fish and Wildlife Conservation
Commission (FFWCC)
Northwest Florida Water Management
District (NFWWMD)
South Florida Water Management District
(SFWMD)
Southwest Florida Water Management
District (SWFWMD)
St. Johns River Water Management District
(SJRWMD)
Suwannee River Water Management District
(SRWMD)



Issues Agencies Comment On in ETDM

- Aesthetics
- Air Quality
- Coastal and Marine
- Contaminated Sites
- Economic
- Farmlands
- Floodplains
- Historic and Archaeological Sites
- Infrastructure
- Land Use
- Mobility
- Navigation
- Recreation Areas
- Relocation
- Indirect and Cumulative Effects
- Section 4(f) Potential
- Social/Community Concerns
- Special Designations
- Water Quality and Quantity
- Wetlands
- Wildlife and Habitat

Through Agency Operating Agreements, agencies are tied to specific issues above. Meaning, comments are expected from the agencies on the issues they manage, regulate, or consult on.

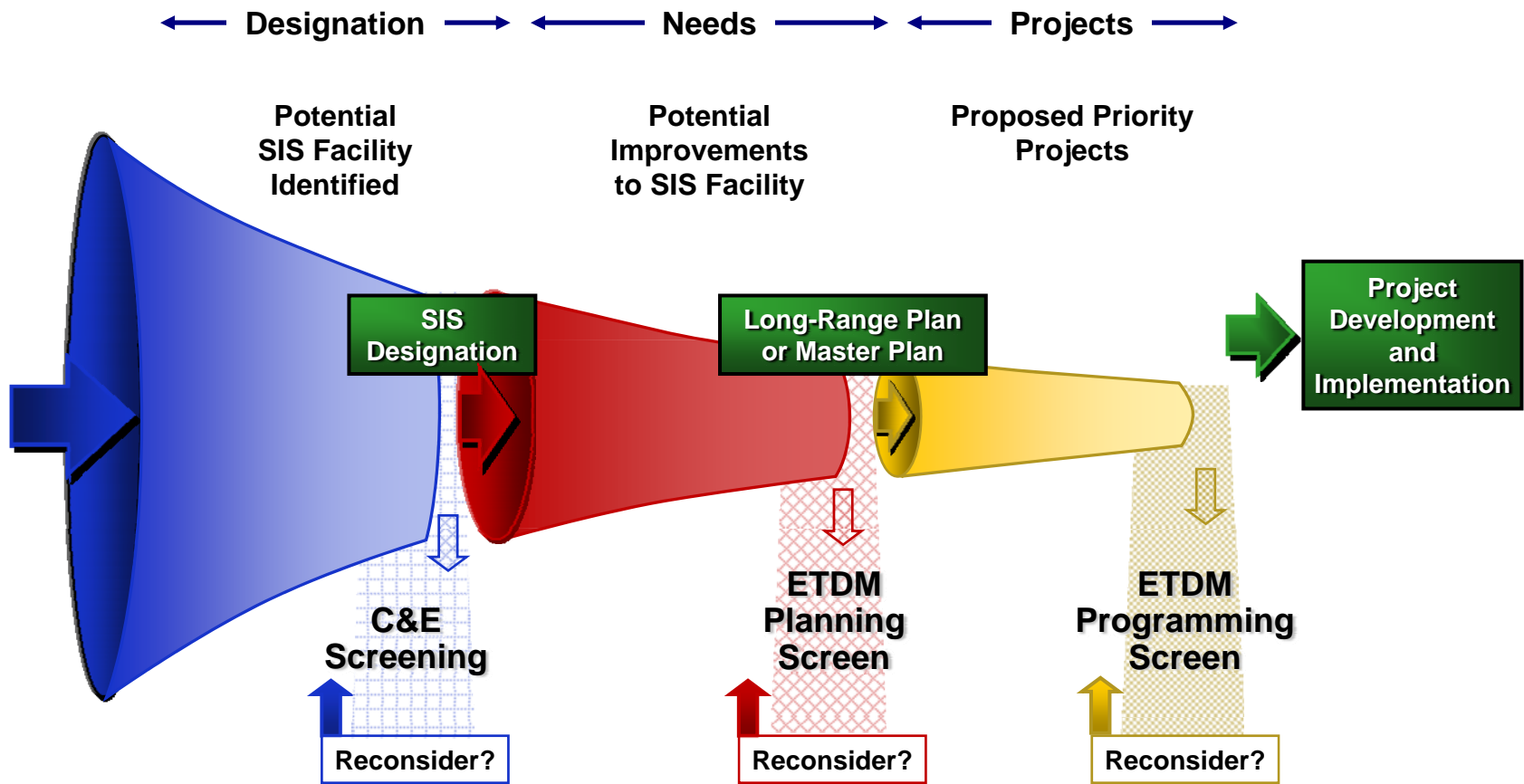


Types of Projects Subject to ETDM Screening

- “Major Transportation Projects”
 - Roadway projects
 - Where capacity is added to an existing road in the form of additional through lanes
 - New roadways
 - New interchanges, interchange modifications
 - New bridges, bridge replacements, bridge projects involving additional lanes
 - Public transportation projects
 - Major capital improvements including intermodal Centers, rail, transit centers, bus rapid transit



Relationship of C&E Screening and ETDM Processes



Background Information

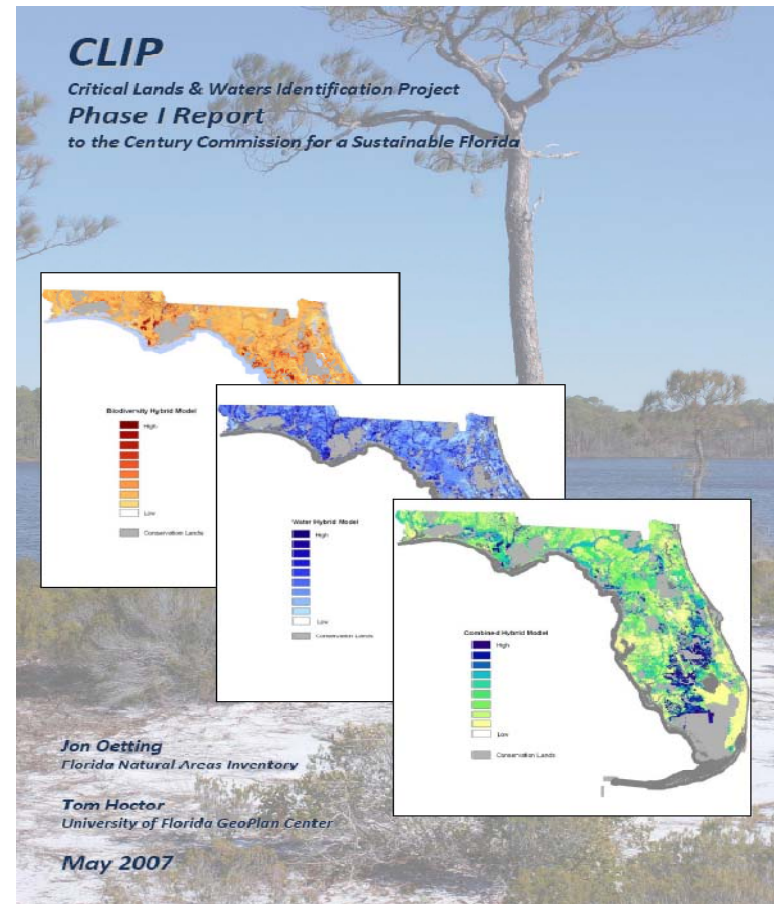
- Two screening processes
 - SIS community and environmental screening process (SIS designation)
 - Efficient Transportation Decision-Making process (major transportation projects)

- Two new sources of information
 - Critical Lands and Waters Identification Project
 - Cooperative Conservation Blueprint



Critical Lands & Waters Identification Project (CLIP)

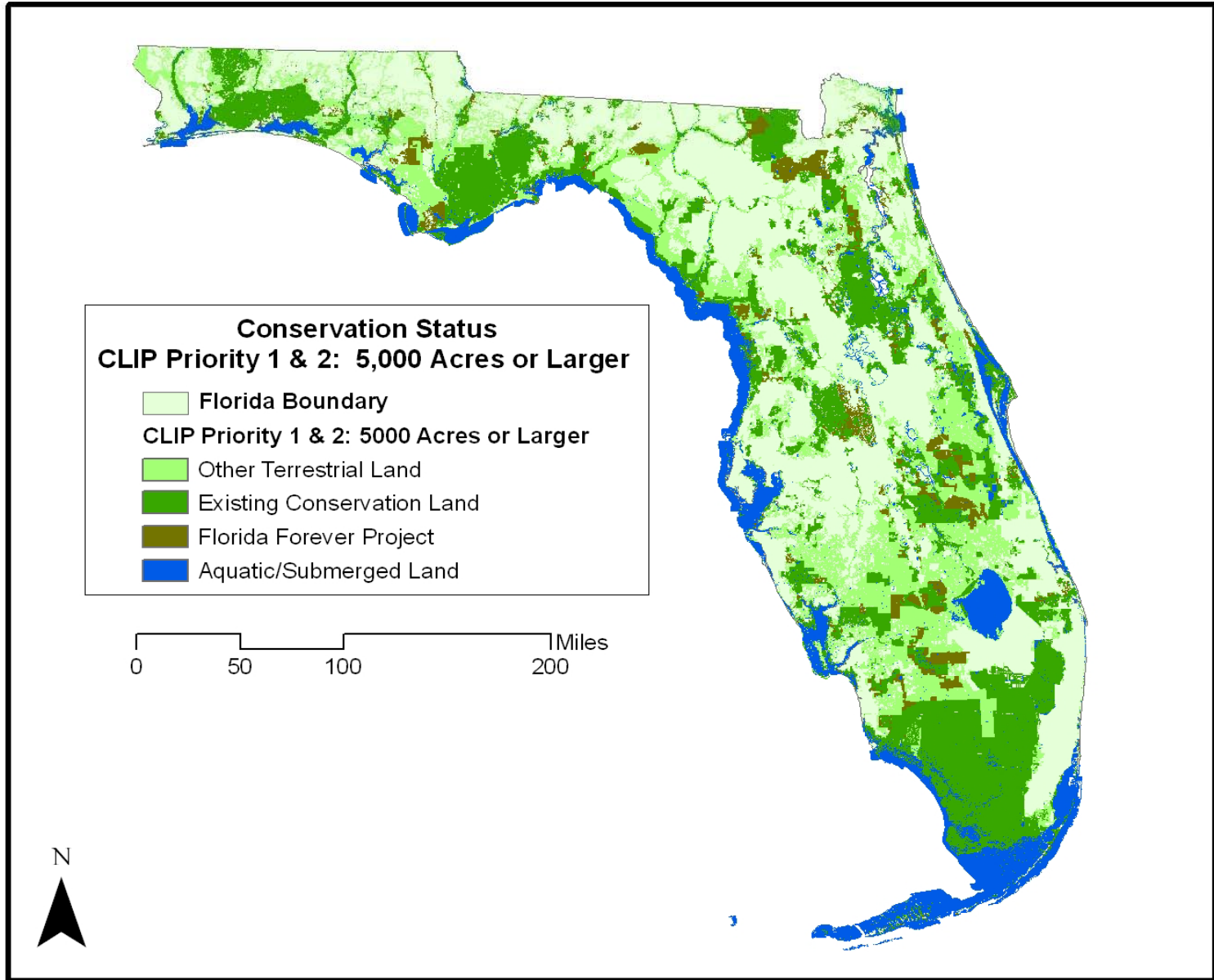
- Statewide natural resource spatial database
- Prioritizes biodiversity, landscapes, water
- Identifies Florida's "green infrastructure"
- Expert science product
- Multi-agency technical advisory group



Cooperative Conservation Blueprint

- A consensus starting point for planning our future
 - Builds on CLIP
 - Cross links with social & economic priorities
 - Creates 'inclusive' overlay map
 - Provides basis for incentives
 - Created with outreach to
 - state's largest landowners
 - State land use agencies
 - Counties and Regional Planning Councils





Key Questions for Breakout Group

- How can existing processes for community and environmental screening, ETDM, and others be integrated and enhanced to ensure the SIS supports environmental stewardship and community livability goals?
- Should we give greater attention to air quality, climate change, and energy issues in SIS planning and investment decisions?
- How should SIS planning and investment decisions incorporate regional and community visions?



Draft Policy Recommendations

- A.** Continue to apply the SIS community and environmental screening process to all facilities proposed for SIS or Emerging SIS designation, regardless of mode or ownership.

- B.** Apply the Efficient Transportation Decision-Making (ETDM) process to help evaluate all SIS projects, regardless of their mode or ownership.



Draft Policy Recommendations (cont.)

- C.** Strengthen linkages among planning and environmental processes to ensure early and ongoing partner coordination, leverage data and resources, and provide for sequentially more detailed consideration of community and environmental issues at all stages of SIS designation, planning, investment decision-making, and project development. Processes that should be integrated include:
1. SIS community and environmental screening process for designation;
 2. Efficient Transportation Decision-Making (ETDM) process;
 3. project development and environmental review processes; and
 4. the permitting process.



Draft Policy Recommendations (cont.)

- D.** Consider air quality, energy, and climate changes issues in the SIS designation, planning, and investment decisions.
- E.** Continue to encourage development of long-range regional visions for integrating transportation, land use, economic development, community and environmental decisions, and use of these visions as guidance to SIS planning and investment decisions.
- F.** Develop guidelines for determining whether a regional vision has sufficient local government support to be considered as input to SIS or other transportation decision-making processes.





Questions or Comments?

Buckle up, every trip, every time!

