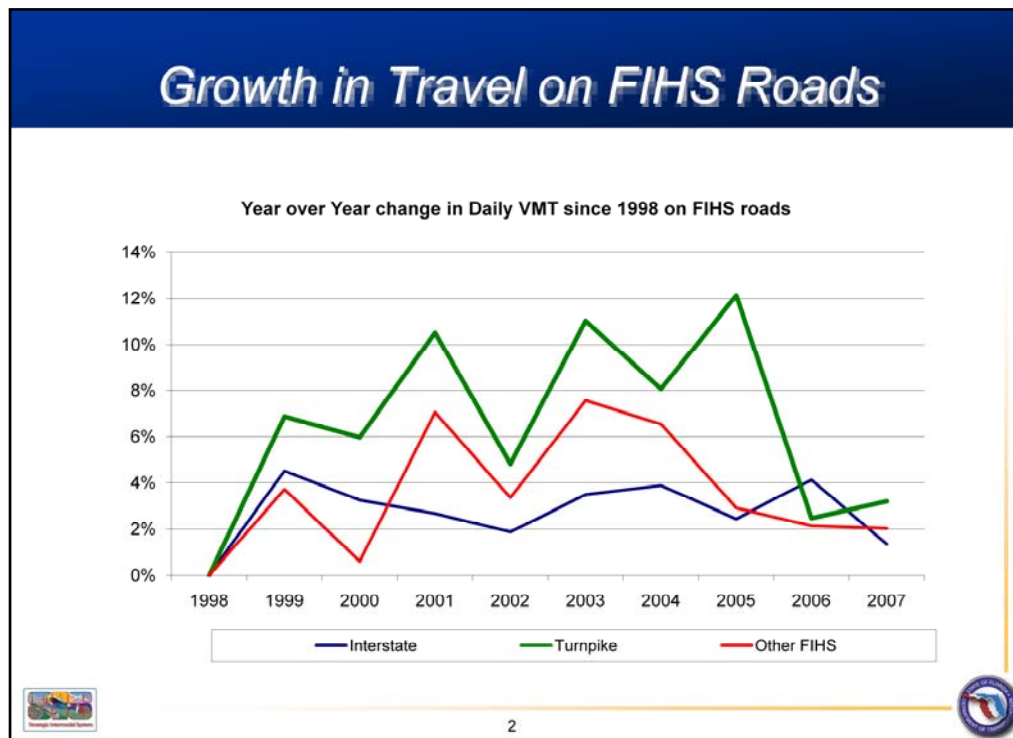


- This slide shows the growth rate of daily vehicle miles traveled on Florida Interstate Highway System (FIHS) roads to non-FIHS state highway system (SHS) road. Growth of VMT on the FIHS (both gross and percentage increase) has been three times that of the other SHS roads. FIHS roads are a subset of roads on the SHS and include limited and controlled access roads (e.g. interstate, Turnpike facilities). SIS highways includes virtually all of the FIHS roads, along with National Highway System roads providing connectivity to Alabama and Georgian, SHS roads serving Rural Areas of Critical Economic Concern and intermodal connectors.



As noted early, since 1998 the growth rate of VMT on FIHS roads has been three times higher than that on non-FIHS state highway roads. During this timeframe, VMT grew at the higher rate on Turnpike roads (7.2% average annual rate), indicating the travelers are willing to pay a premium for a reliable, less congested trip. The annual growth rate in VMT on interstate and other FIHS roads was roughly the same (average annually rate of 3.1% and 4.0%, respectively).

In addition, truck traffic VMT has been increasing faster than passenger vehicle VMT, particularly on FIHS roads. For example, truck VMT increased by an annual average of 4.8% since 1998. There has been a drop in truck VMT (on all types of SHS roads) between 1996 and 1997; it's not clear if this trend will continue long term – in contrast, car VMT increased (2.6% on FIHS, 1.0% on SHS).