



# *2010 SIS Strategic Plan Update*

## *Urban Issues Breakout Group - 1<sup>st</sup> Meeting*

Florida Department of Transportation



April 17, 2009



# Agenda

- Breakout Groups Charge
- Background on Urban Issues in Initial SIS Plan
- New Starts Program (FDOT Transit Office)
- FDOT Efforts to Reduce Urban Congestion
- Key Urban Issues Identified
- Discussion Questions – Open Forum
- Next Meeting

# *Breakout Groups Charge*

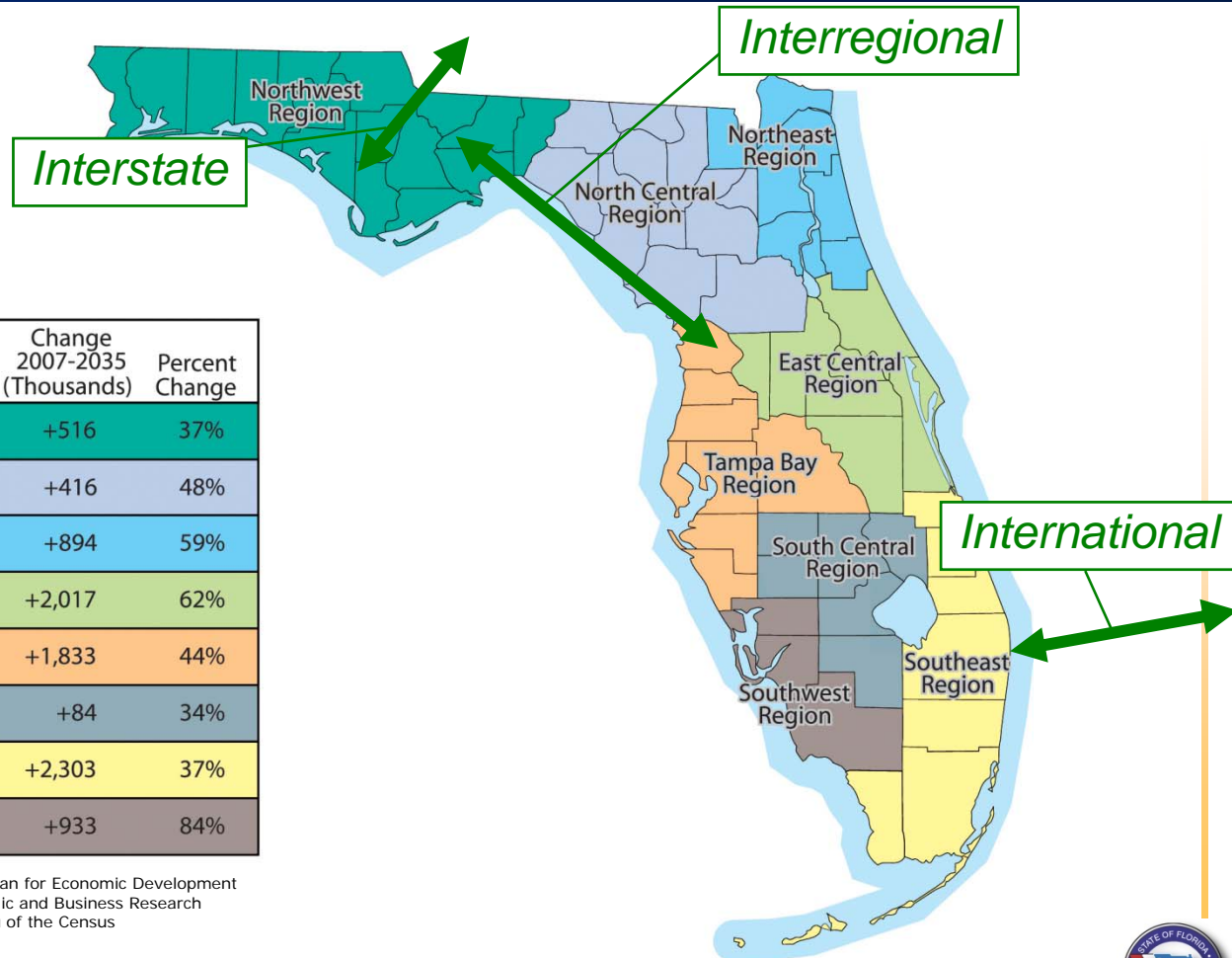
- Purpose
  - Clarify issues and draft potential recommendations for Leadership Committee before May meeting
  
- Process
  - 2 teleconferences through May meeting; potential follow-up call between May and June
  
- Roles
  - Group members (or designees) participate in discussion and develop consensus recommendations
  - Opportunity for public comment at each meeting
  - Facilitators guide discussion
  - Support team (FDOT staff and consultants) provide technical input

# *Leadership Commmmitee: Key Urban Issues*

1. Intraregional Mobility Needs
2. Urban Congestion
3. Regional/Local Road Systems
4. Public Transportation Systems
5. Urban Growth Management Goals



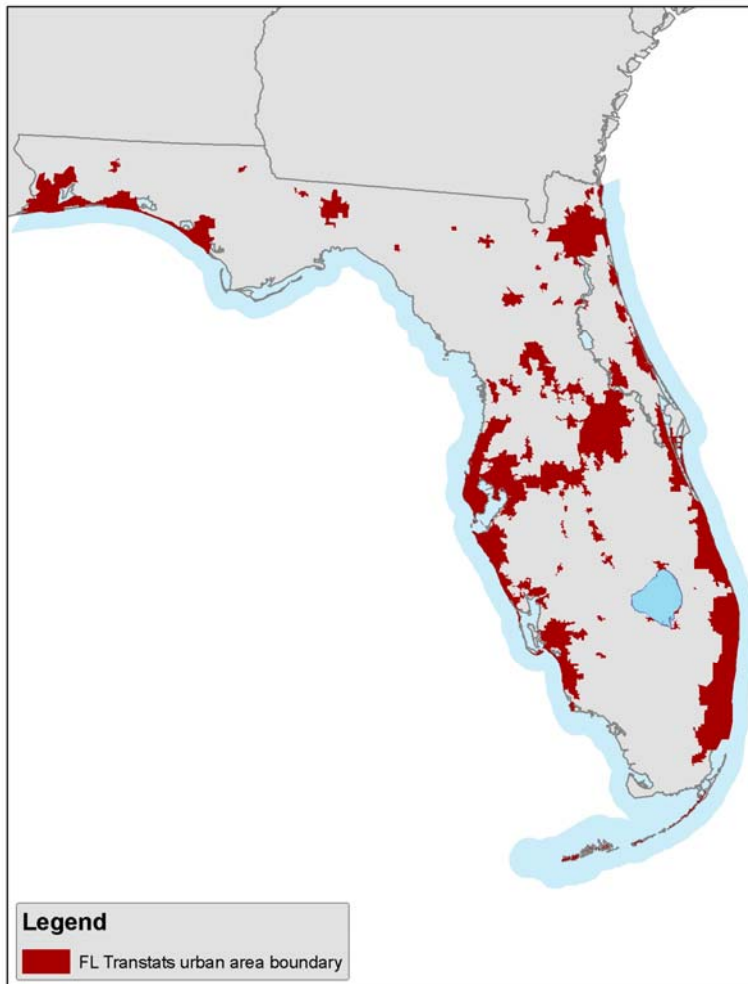
# The SIS: Emphasis on International, Interstate and Interregional Travel



Sources: Enterprise Florida, Florida's Strategic Plan for Economic Development  
 University of Florida, Bureau of Economic and Business Research  
 U.S. Department of Commerce, Bureau of the Census  
 Florida Department of Transportation

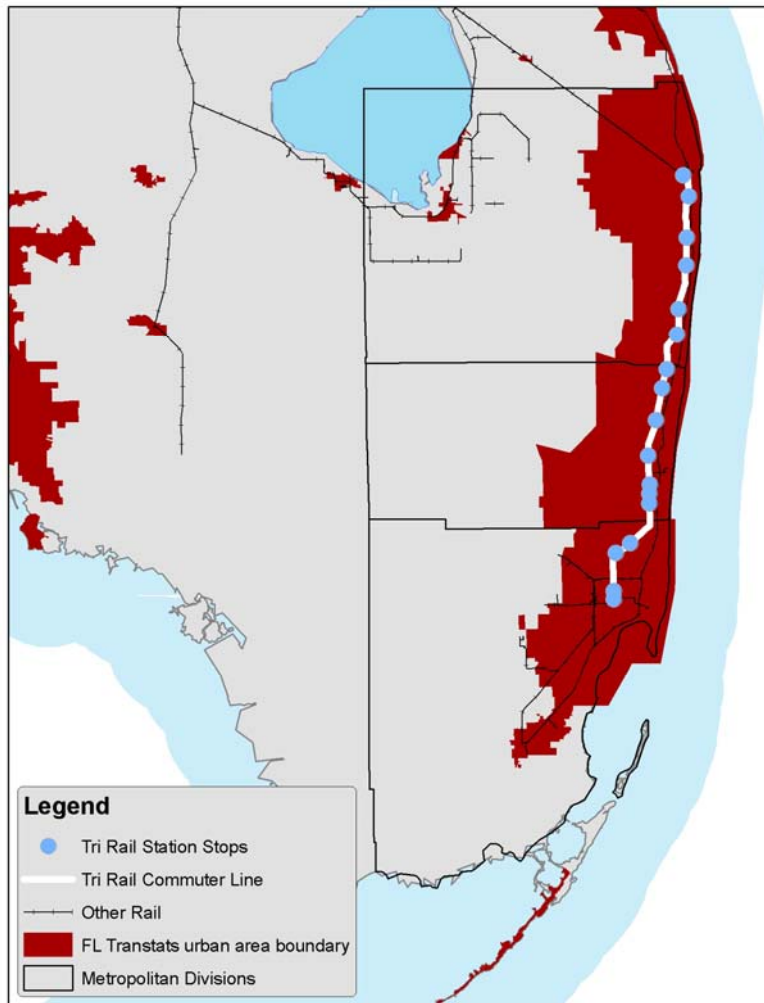


# Urban Regions and Economic Regions



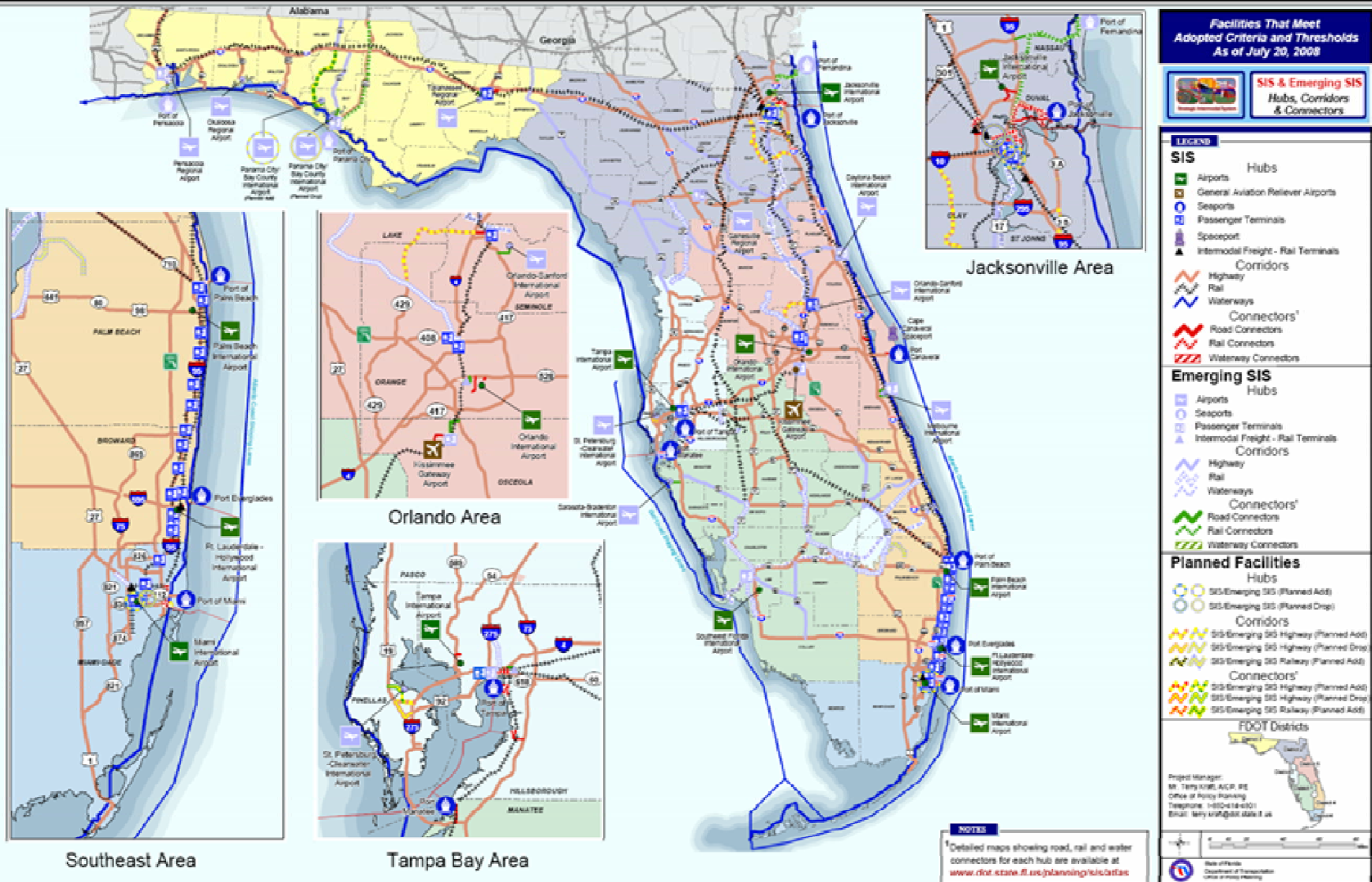
- Economic regions do not capture all intercity travel

# South Florida Urban Regions



- Multiple urban areas in one region
  - Tri-Rail connection to Amtrak
  - Other inter-urban transit?

# The SIS: Designated Facilities as of 7/20/08



# The SIS: Policy Framework

## Florida's Transportation System

	<i>SIS &amp; Emerging SIS</i>	<i>Regional</i>	<i>Local</i>
<i>Description</i>	<ul style="list-style-type: none"> <li>Statewide and interregional significance</li> </ul>	<ul style="list-style-type: none"> <li>Intraregional significance</li> </ul>	<ul style="list-style-type: none"> <li>Local significance</li> </ul>
<i>Designated based on...</i>	<ul style="list-style-type: none"> <li>Quantitative passenger and freight activity</li> <li>Access to economic regions</li> </ul>	<ul style="list-style-type: none"> <li>Regional objectives and priorities (transportation activity, access, etc.)</li> </ul>	<ul style="list-style-type: none"> <li>All other facilities</li> </ul>
<i>Led by...</i>	<ul style="list-style-type: none"> <li>State</li> </ul>	<ul style="list-style-type: none"> <li>Regional partners</li> </ul>	<ul style="list-style-type: none"> <li>Local partners</li> </ul>

# System Facility Examples

## Florida's Transportation System

### *SIS & Emerging SIS*

- Major commercial service airports
- Major deepwater seaports
- Mainline rail corridors/terminals
- Major waterways and shipping lanes
- Major interstate and interregional highway corridors

### *Regional*

- Other commercial service and major reliever airports
- Other deepwater and special generator seaports
- Other rail corridors and regional freight terminals
- Intraregional transit systems
- Highway, rail, water corridors serving key activity centers

### *Local*

- General aviation airports
- Smaller ports and marinas
- Smaller freight terminals
- Local passenger transit systems
- Other roadways, rail lines, waterways

# Florida's Transportation System: Roles

Florida's Transportation System			
	<i>SIS &amp; Emerging SIS</i>	<i>Regional</i>	<i>Local</i>
<i>State</i>	<ul style="list-style-type: none"> <li>• <b>Focused planning and investment based on state priorities</b></li> </ul>	<ul style="list-style-type: none"> <li>• Encourage and support strategic linkages to SIS</li> </ul>	<ul style="list-style-type: none"> <li>• Encourage and support strategic linkages to SIS</li> </ul>
<i>Regional Partners</i>	<ul style="list-style-type: none"> <li>• Use SIS as backbone for regional plan</li> <li>• Support key SIS projects</li> </ul>	<ul style="list-style-type: none"> <li>• <b>Focused planning and investment based on regional priorities</b></li> </ul>	<ul style="list-style-type: none"> <li>• Encourage and support strategic linkages to regional systems</li> </ul>
<i>Local Partners</i>	<ul style="list-style-type: none"> <li>• Use as backbone for regional plan</li> <li>• Support key SIS projects</li> </ul>	<ul style="list-style-type: none"> <li>• Use as backbone for local plan</li> <li>• Support key regional projects</li> </ul>	<ul style="list-style-type: none"> <li>• <b>Focused planning and investment based on local priorities</b></li> </ul>



# Evolution of the SIS and Urban Transportation

## ■ SIS Strategic Plan, 2005

- Focuses state role on travel between regions, states, nations
- Most urban transit systems and arterials not designated on SIS
  - Tri-Rail designated due to SFRC and connectivity to interstate Amtrak system
- FDOT commits to work with partners to
  - Determine if any exclusive-use transit routes are of interregional significance and therefore should be added to the SIS in the future
  - Identify regionally significant transit routes
  - Consider transit, bicycle and pedestrian access needs at SIS passenger hubs
  - Investigate expanded funding options for urban transportation



# *Evolution of the SIS and Urban Transportation (continued)*

- Growth Management Legislation, 2005
  - Requires local governments to develop a community vision that provides for sustainable growth
  - Strengthens FDOT's ability to protect the function of the SIS within transportation concurrency exception areas
  - Creates new funding programs for regional and local transportation
    - Transportation Regional Incentive Program
    - Florida Transit New Starts Program



A Pay As You Grow Plan For Florida's Future

# Evolution of the SIS and Urban Transportation (continued)

- 2025 Florida Transportation Plan, 2005
  - Reaffirms three-tiered approach to planning Florida's transportation system
  - Establishes long-range objectives at each level, including
    - SIS: reduce delay; preserve new capacity for interregional trips
    - Regional: develop regional visions and action plans to integrate transportation and other decisions
    - Local: develop multimodal transportation systems that support community visions; expand transportation choices; reduce per capita travel by single occupant vehicles

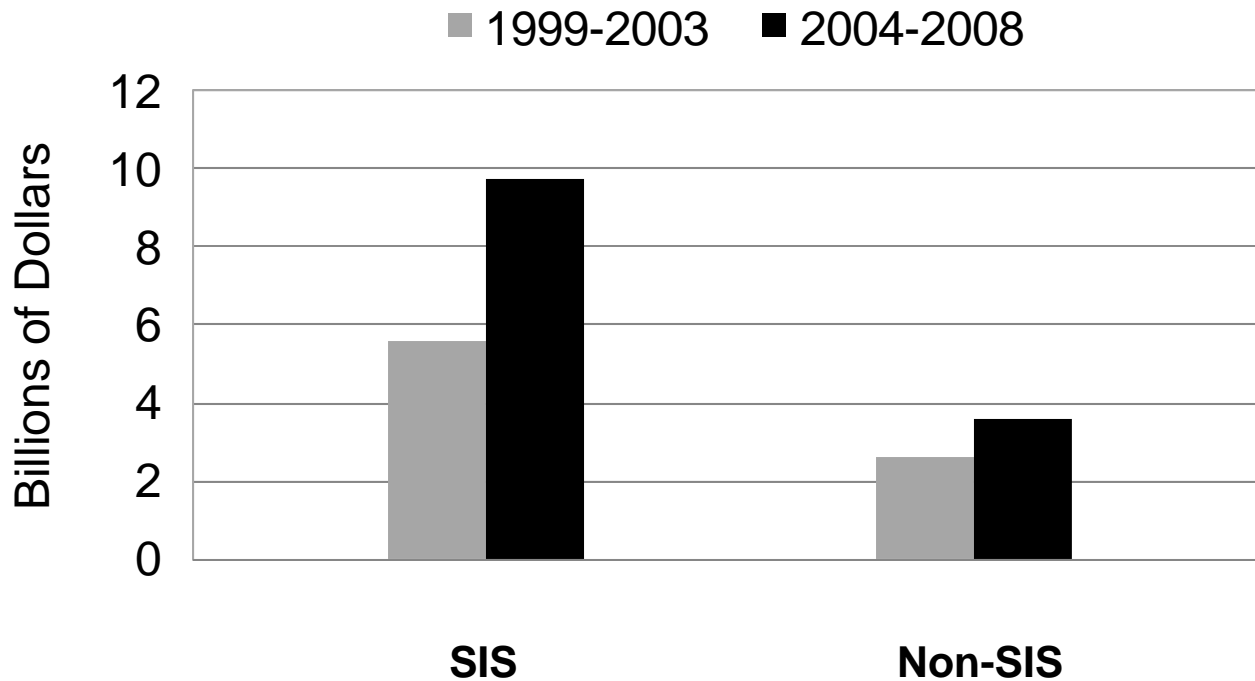


# *SIS Accomplishments*

- Stronger Role for Non-Highway Modes
- More Attention to Intermodal Connectors
- Greater Emphasis on Interregional Connectivity and Corridor Development
- Stronger Link Between Transportation, Land Use, Economic Development Policies
- Strengthened Partnerships
- SIS and non-SIS funding increased

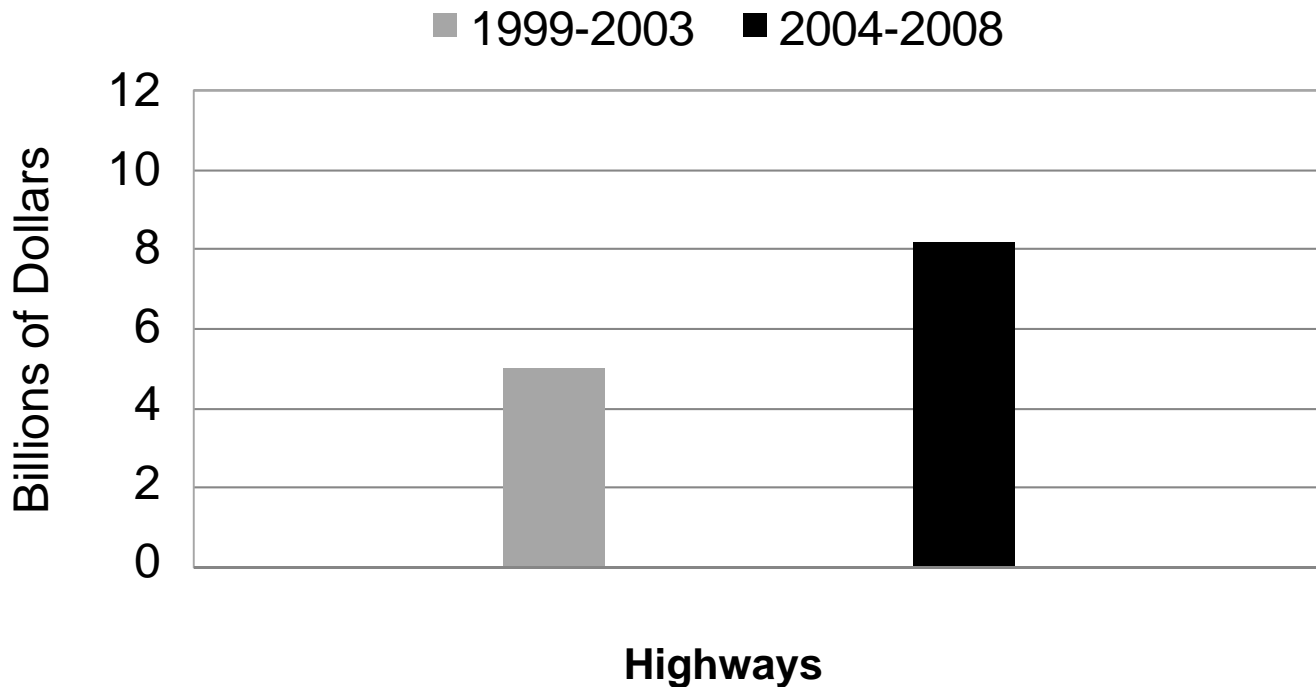
# SIS Accomplishments

## Capacity Investments Before and After Creation of the SIS



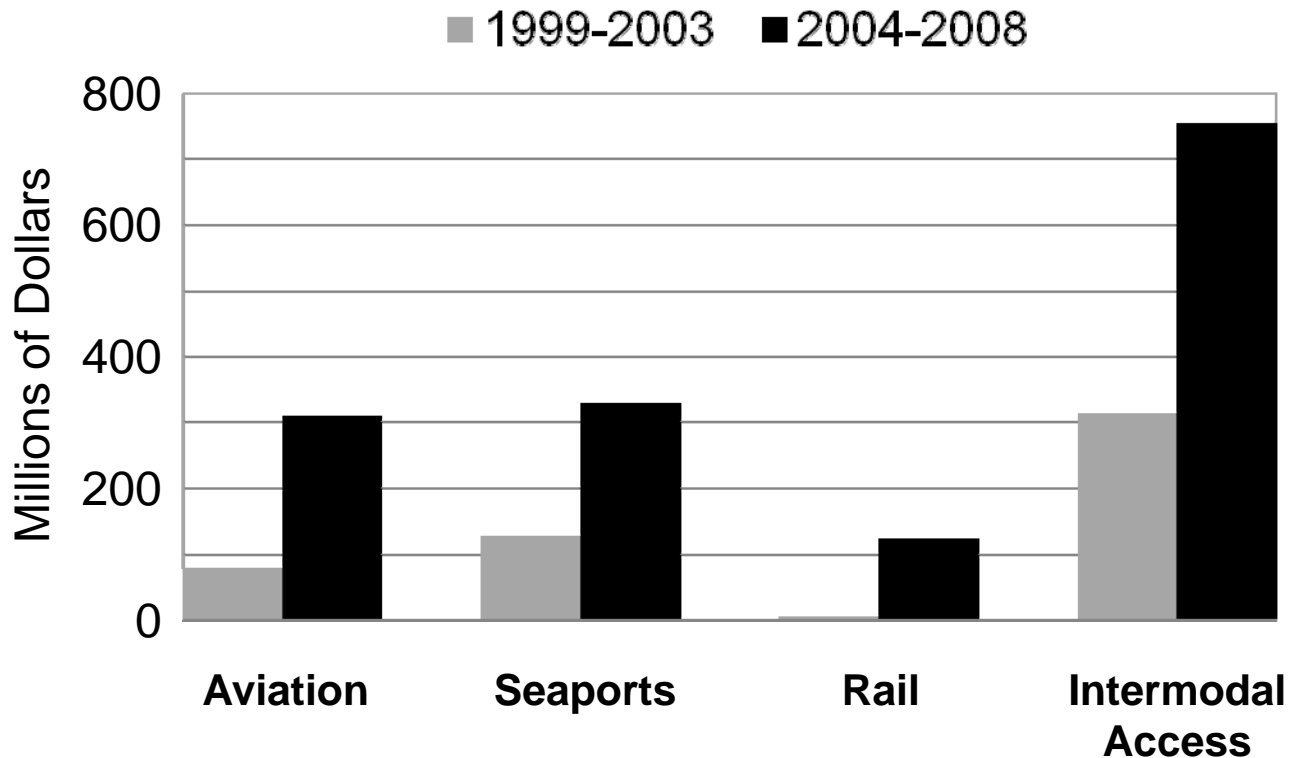
# SIS Accomplishments

## SIS Highway Capacity Investments Before and After Creation of the SIS



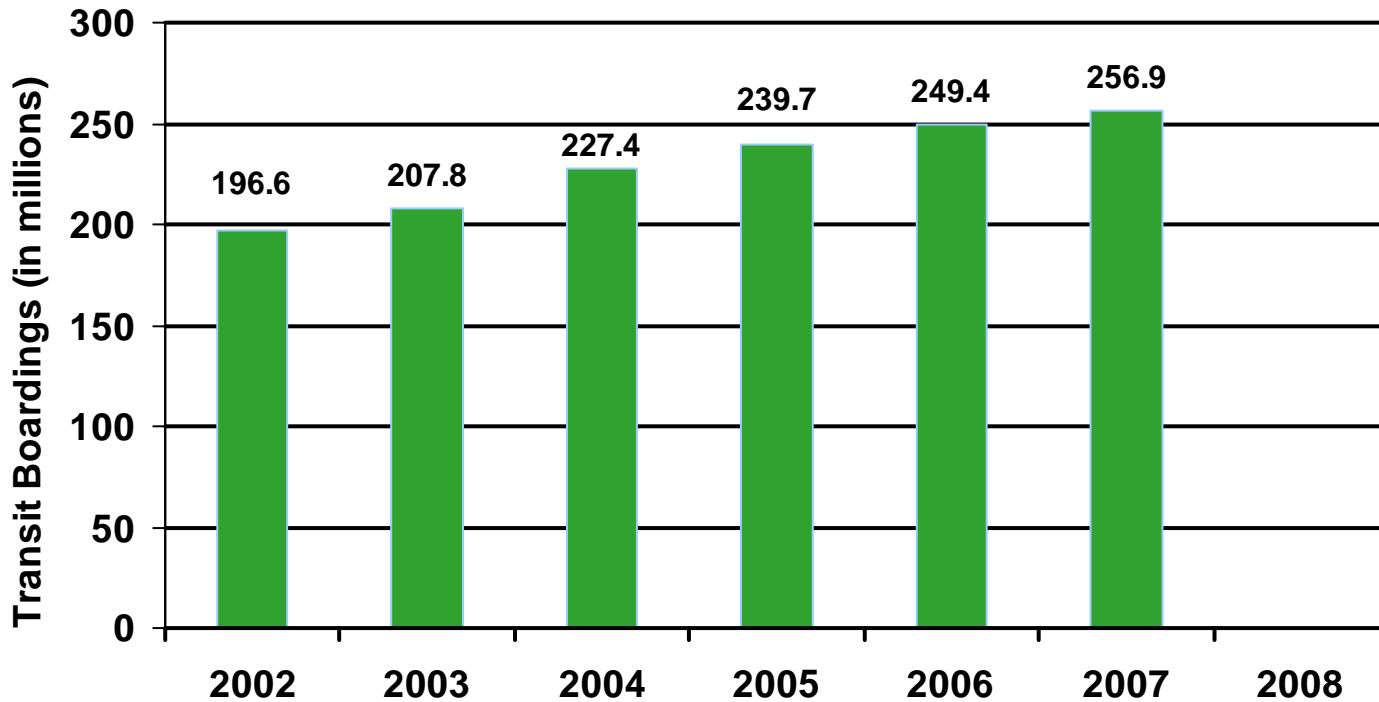
# SIS Accomplishments

## SIS Non-Highway Capacity Investments Before and After Creation of the SIS



# Annual Transit Boardings

## Fixed Routes Only



Data includes all Florida Urban Systems.



# *New Starts Transit Program*

- Created by SB 360, Growth Management, in 2005
  - Dedicated 10% of Documentary Stamp Tax Collections going to the Department for Transit New Starts
  - \$54 million per year cash, projected \$709 million in commitment levels over 10 years
  
- Purpose
  - To advance projects that support growth management goals
  - To help projects qualify for Federal Transit Administration New Starts discretionary funding

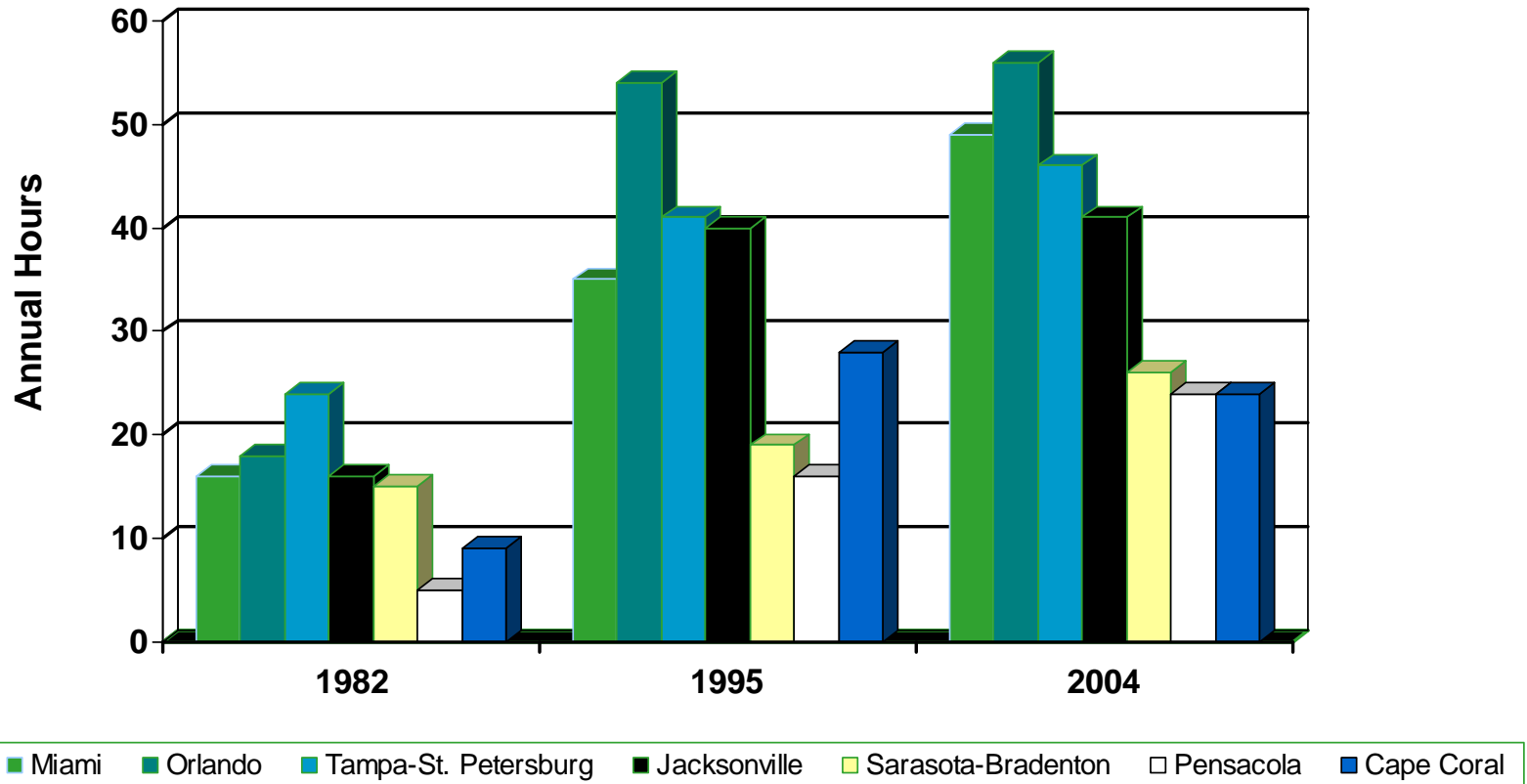
# *New Starts Transit Program*

- Candidate projects include:
  - Miami Metrorail Extensions
  - SunRail
  - Streetcar projects in Miami and Fort Lauderdale
  - Bus Rapid Transit (BRT) in Jacksonville and Sarasota
  
- Projects included in Work Program:
  - MDT MIC/Earlington Heights (before Growth Management funds made available)
  - MDT North Corridor
  - SunRail
  
- Due to economic conditions, actual Documentary Stamp Tax Collections are extremely low
  - New Starts commitment levels were originally projected at \$220 million total for 2009 – 2011
  - Current estimate is less than \$25 million total for 2009 - 2011



# Annual Hours of Delay per Traveler

## Florida Urban Areas

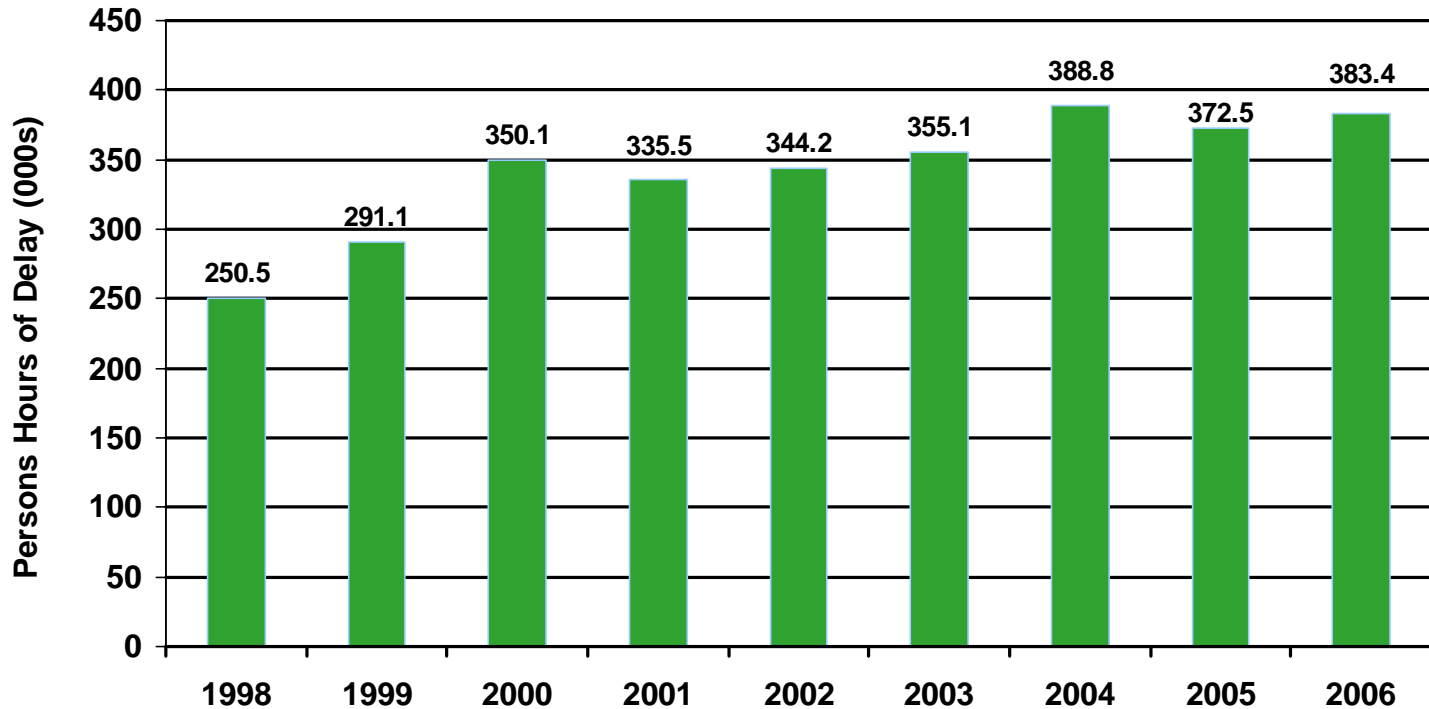


Source: 2005 Annual Urban Mobility Report, Texas Transportation Institute



# Daily Person Hours of Delay

## Total Delay on FIHS



Total delay shows statewide daily person hours of delay on Florida Interstate Highway System (FIHS) in thousands (K). The FIHS consists of interstates, the Turnpike Enterprise, freeways, and other high speed, high volume roadways.

Source: FDOT, Florida Highway Data Source Book



# FDOT Efforts to Reduce Urban Congestion

- I-95 Express (Managed Lanes)

- Urban Partnership Agreement
  - 4 Ts: Toll, Transit, Technology, Telecommuting
- Between I-395 in Miami to Broward Blvd in Fort Lauderdale
- Phase IA (Dec 2008) + Phase IB (late 2009) + Phase II (2011)
- Variable Priced Toll
  - Goal to keep traffic moving at approx. 45-50 mph
- High Occupancy Toll (HOT)
  - Free for registered HOV 3+, registered hybrid vehicles and motorcycles
- Bus Rapid Transit (BRT)
- Ramp Signaling (Feb 2009)



# FDOT Efforts to Reduce Urban Congestion

- I-595 Corridor Improvements (595 Express)
  - P<sup>3</sup>: Public Private Partnership with I-595 Express, LLC
    - Agreement signed March 5, 2009
    - Design, Build, Finance, Operate and Maintain (DBFOM) through the 35-year agreement term
  - Between I-75 interchange and I-595/I-95 interchange in central Broward County
  - Tolled Reversible Ground Level Express Lane
  - Geometric Improvements
  - Addition of Auxiliary Lanes
  - Bus Rapid Transit (BRT)/Express Bus Service
  - Accomodation of Transit Envelope
    - Central Broward East-West Transit Analysis



# *FDOT Efforts to Reduce Urban Congestion*

- FDOT ITS Program
  - 511 Advanced Traveler Information System (ATIS)
  - Regional Transportation Management Centers
    - SunGuide Software
  - Transportation Systems Management and Operations (TSMO)
  - Ramp Management
  - Transit Signal Priority
  
- Congestion Management
  - Florida's Mobility Management Process
  - Florida's Commuter Assistance Programs
  - FDOT's Telecommuting Program



# *Key Urban Issues Identified*

1. Intraregional Mobility Needs
2. Urban Congestion
3. Regional/Local Road Systems
4. Public Transportation Systems
5. Urban Growth Management Goals

# Key Questions for Breakout Group

## 1. Intraregional Mobility Needs

- How should the SIS support **intraregional** movement of people and goods, recognizing the importance of Florida's urban areas?

## 2. Urban Congestion

- How should the impact of **urban congestion** on interregional, interstate, and international trips using the SIS be reduced?

## 3. Regional/Local Road Systems

- How should the role of **regional and local road systems** linked to the SIS be addressed?

# *Key Questions for Breakout Group (cont.)*

## 4. Public Transportation Systems

- How should the role of **public transportation** systems (transit and commuter rail) on the SIS be re-examined?

## 5. Urban Growth Management Goals

- How should the relationship between the SIS and land use planning/**growth management** in urban areas be re-examined?

# *Key Questions for Breakout Group (cont.)*

- What **policy changes** should be considered as part of the 2010 SIS Strategic Plan update?
  - Changes to goals and objectives
  - Changes to designation criteria
  - Changes to planning and prioritization processes
  - Other
  
- How can **partner coordination** be enhanced to address the urban issues?

# Summary of Presentation

- Breakout Groups Charge
- Background on Urban Issues in Initial SIS Plan
- New Starts Program (FDOT Transit Office)
- FDOT Efforts to Reduce Urban Congestion
- Key Urban Issues Identified
- **Discussion Questions – Open Forum**
- Next Meeting

# Next Meeting

- Date(s)
- Time
- Duration
- Agenda
  - Additional Presentations?
  - Additional Discussion
  - Development of Preliminary Policy Statements
- Support Team Tasks

*Thank you for your input!*





*Questions or Comments?*

*Buckle up, every trip, every time!*