

Suwannee County Operating Data

Service Statistics

Vehicle Data	2002	2003	% Change
Vehicle Miles	469,784	478,962	2%
Revenue Miles	325,684	379,834	17%
Roadcalls	11	8	-27%
Accidents	0	0	NA
Vehicles	3	17	467%
Driver Hours	24,200	28,837	19%

General Data	2002	2003	% Change
Total Passengers Served (UPHC)	5,143	5,338	4%
Complaints	16	12	-25%
Commendations	1	0	-100%
Passenger No-Shows	0	26	NA
Unmet Trip Request	0	29	NA

Passenger Trip Information

By Type of Service	2002	2003	% Change
Fixed Route	29,142	29,932	3%
Deviated Fixed Route	0	0	NA
Ambulatory	31,396	32,652	4%
Non-Ambulatory	6,037	6,280	4%
Stretcher	3,509	3,630	3%
School Board Services	0	0	NA
Total Trips	70,084	72,494	3%

By Passenger Type	2002	2003	% Change
Elderly	0	16,674	Low Income
Disabled	0	0	Disab. & LI
Low Income	13,774	0	Other
Disab. & LI	7,249	0	Disabled
Children	19,573	15,224	Low Income
Disabled	0	0	Disab. & LI
Total Trips	72,494	72,494	

By Trip Purpose	No. of Trips	% of Total
Medical	62,345	86%
Employment	725	1%
Education/Training/Daycare	9,424	13%
Nutritional	0	0%
Life-Sustaining/Other	0	0%
Total Trips	72,494	100%

By Funding Source	No. of Trips	% of Total
CTD	7,821	11%
AHCA	38,561	53%
DCF	15,264	21%
DOEA	0	0%
WAGES	0	0%
Other	10,848	15%
Total Trips	72,494	100%

Financial Summary

Revenues	2002	2003	% Change
CTD	120,814	121,548	1%
USDOT & FDOT	39,600	39,600	0%
DCF	32,816	31,289	-5%
AHCA (Medicaid)	48,517	57,854	19%
DOH	725	0	-100%
DOE (state)	737	785	7%
DOEA	0	0	NA
DCA	0	0	NA
DLES	0	0	NA
DJJ	0	0	NA
Other Federal Prog.	0	0	NA
Local Government	15,000	15,000	0%
Local Non-Gov't	28,804	29,902	4%
Total Revenue	\$287,013	\$295,978	3%

Expenses	2002	2003	% Change
Labor	119,860	121,254	1%
Fringe Benefits	73,053	74,261	2%
Services	3,990	3,236	-19%
Materials and Supplies	24,040	22,561	-6%
Utilities	10,683	11,215	5%
Casualty and Liability	22,155	23,651	7%
Taxes	0	0	NA
Purchased Transp.	40,990	36,254	-12%
Leases and Rentals	1,851	0	-100%
Annual Depreciation	0	1,851	NA
Contributed Services	7,501	7,501	0%
Other Expenses	293	0	-100%
Total Expenses	\$304,416	\$301,784	-1%

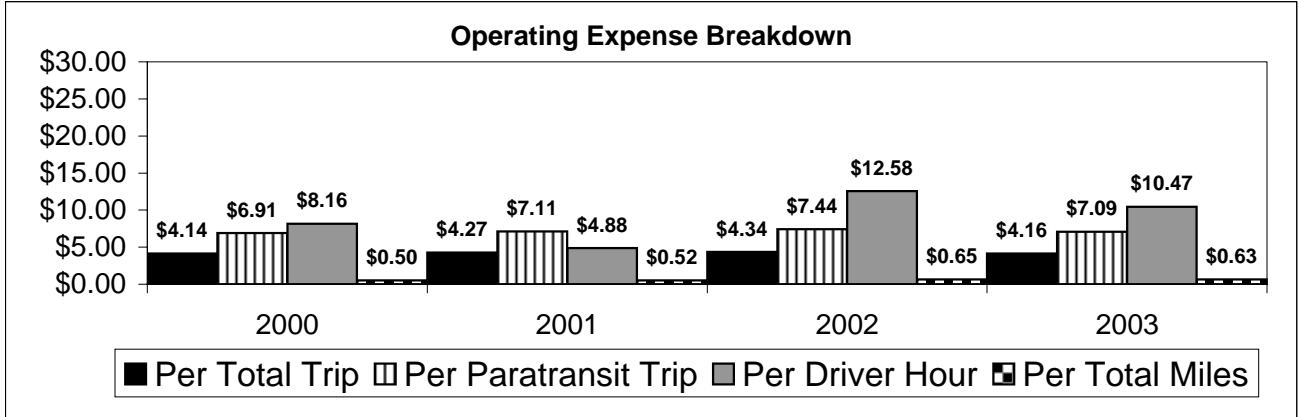
NA = Not Applicable

UPHC = Unduplicated Passenger Head Count

* = Trips the CTC was unable to provide when the passenger called for service.

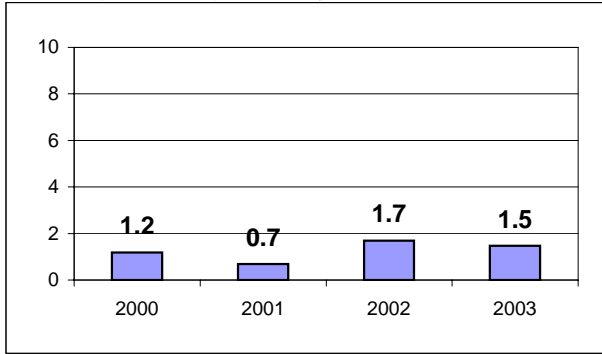
** = Refer to County Summary for explanation

Suwannee County 2000-2003 Performance History



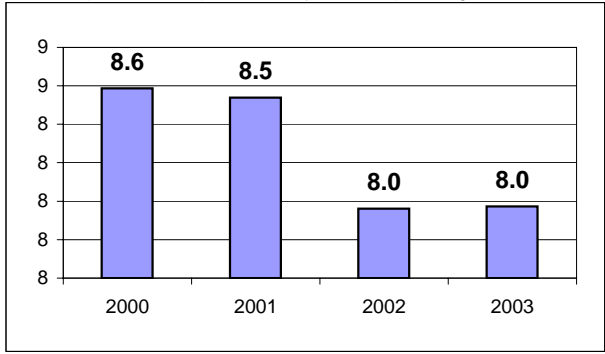
Average Trips Per Driver Hour

The paratransit trips divided by the total total driver hours.



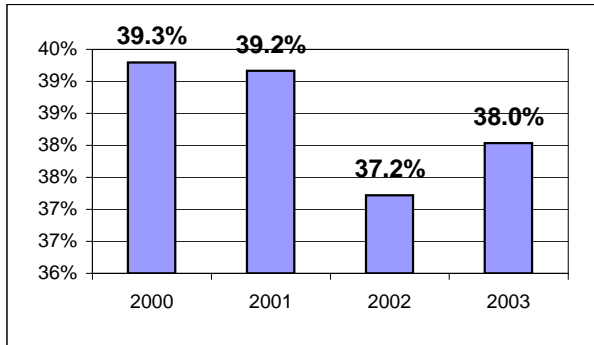
Average Trips Taken Per Paratransit Passenger

The paratransit trips divided by the total passengers served.



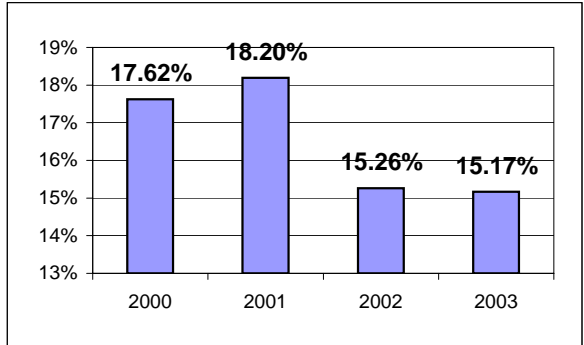
Potential TD Population Transported (%)

The total passengers served divided by the Potential TD Population.



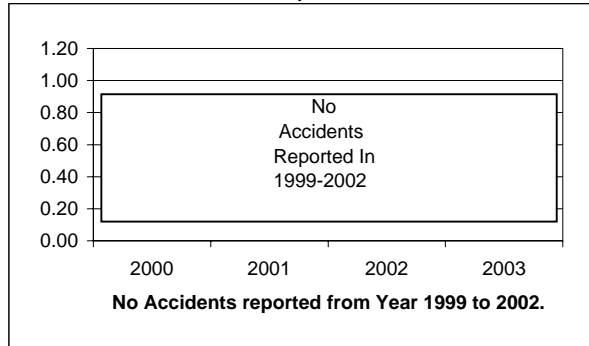
Local Funding Of System (%)

The total local revenue received divided by the total revenue.



Number Of Accidents Every 100,000 Miles

The number of accidents divided by each 100K vehicle miles traveled.



Number Of Miles Traveled Between Roadcalls

The vehicle miles traveled divided by the number of system roadcalls.

