

Putnam County Operating Data

Service Statistics

Vehicle Data	2002	2003	% Change
Vehicle Miles	921,764	870,480	-6%
Revenue Miles	737,411	696,384	-6%
Roadcalls	22	20	-9%
Accidents	0	3	NA
Vehicles	38	33	-13%
Driver Hours	41,251	45,381	10%

General Data	2002	2003	% Change
Total Passengers Served (UPHC)	7,512	4,221	-44%
Complaints	2	2	0%
Commendations	3	2	-33%
Passenger No-Shows	3,591	2,250	-37%
Unmet Trip Request	12	12	0%

Passenger Trip Information

By Type of Service	2002	2003	% Change
Fixed Route	0	0	NA
Deviated Fixed Route	128,960	143,142	11%
Ambulatory	0	0	NA
Non-Ambulatory	9,025	9,025	0%
Stretcher	1,050	1,050	0%
School Board Services	0	0	NA
Total Trips	139,035	153,217	10%

By Passenger Type			
<i>Elderly</i>	0	<i>Low Income</i>	1,517
<i>Disabled</i>	0	<i>Disab. & LI</i>	22,937
<i>Low Income</i>	0	Other	67,415
<i>Disab. & LI</i>	15,168	<i>Disabled</i>	1,747
Children	0	<i>Low Income</i>	0
<i>Disabled</i>	0	<i>Disab. & LI</i>	44,433
Total Trips	Total Trips		153,217

By Trip Purpose	No. of Trips	% of Total
Medical	38,776	25%
Employment	39,639	26%
Education/Training/Daycare	70,429	46%
Nutritional	2,470	2%
Life-Sustaining/Other	1,903	1%
Total Trips	153,217	100%

By Funding Source	No. of Trips	% of Total
CTD	16,349	11%
AHCA	22,144	14%
DCF	32,845	21%
DOEA	2,470	2%
WAGES	0	0%
Other	79,409	52%
Total Trips	153,217	100%

Financial Summary

Revenues	2002	2003	% Change
CTD	206,738	298,805	45%
USDOT & FDOT	196,178	261,495	33%
DCF	122,800	133,019	8%
AHCA (Medicaid)	527,359	561,503	6%
DOH	0	0	NA
DOE (state)	0	0	NA
DOEA	7,969	21,392	168%
DCA	23,053	60,199	161%
DLES	24,595	14,355	-42%
DJJ	0	0	NA
Other Federal Prog.	78,833	79,866	1%
Local Government	61,116	68,350	12%
Local Non-Gov't	81,357	117,413	44%
Total Revenue	\$1,329,998	\$1,616,397	22%

Expenses	2002	2003	% Change
Labor	612,835	656,198	7%
Fringe Benefits	207,704	207,979	0%
Services	48,694	50,571	4%
Materials and Supplies	256,761	287,662	12%
Utilities	20,599	20,552	0%
Casualty and Liability	145,080	197,750	36%
Taxes	1,075	879	-18%
Purchased Transp.	0	0	NA
Leases and Rentals	14,549	23,661	63%
Annual Depreciation	57,360	57,360	0%
Contributed Services	0	0	NA
Other Expenses	6,710	12,534	87%
Total Expenses	\$1,371,367	\$1,515,146	10%

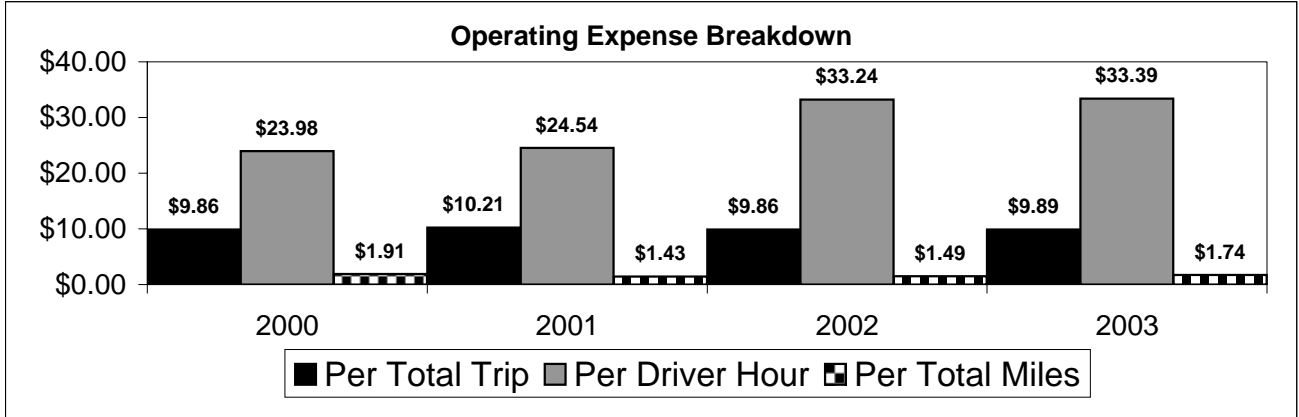
NA = Not Applicable

UPHC = Unduplicated Passenger Head Count

* = Trips the CTC was unable to provide when the passenger called for service.

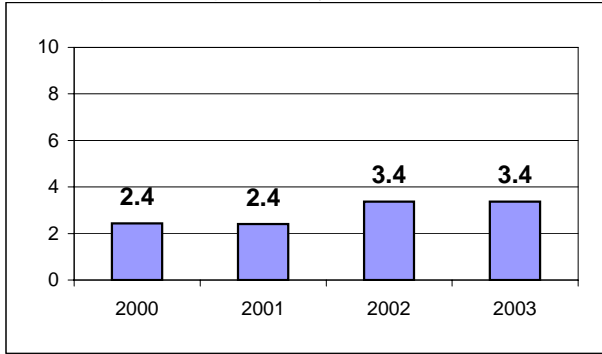
** = Refer to County Summary for explanation

Putnam County 2000-2003 Performance History



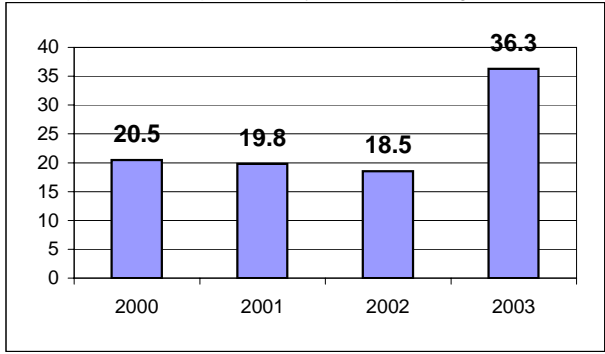
Average Trips Per Driver Hour

The paratransit trips divided by the total total driver hours.



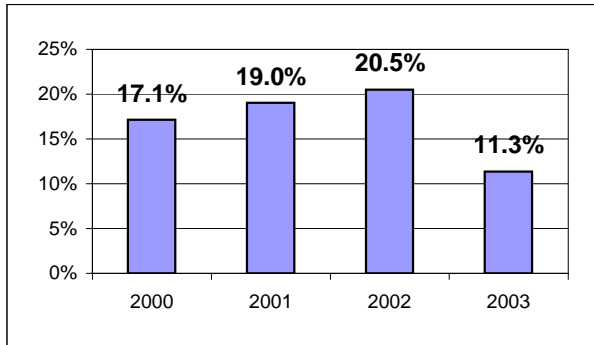
Average Trips Taken Per Paratransit Passenger

The paratransit trips divided by the total passengers served.



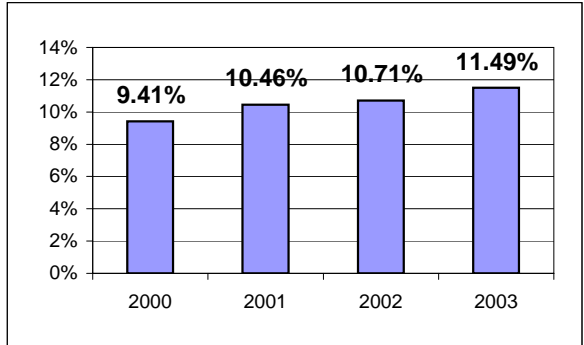
Potential TD Population Transported (%)

The total passengers served divided by the Potential TD Population.



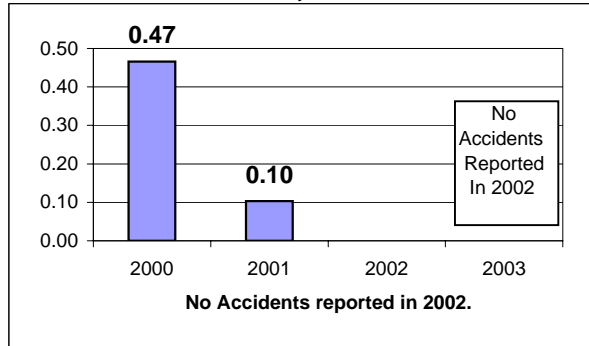
Local Funding Of System (%)

The total local revenue received divided by the total revenue.



Number Of Accidents Every 100,000 Miles

The number of accidents divided by each 100K vehicle miles traveled.



Number Of Miles Traveled Between Roadcalls

The vehicle miles traveled divided by the number of system roadcalls.

