

Hardee County Operating Data

Service Statistics

Vehicle Data	2002	2003	% Change
Vehicle Miles	362,340	600,795	66%
Revenue Miles	296,966	408,472	38%
Roadcalls	4	9	125%
Accidents	1	3	200%
Vehicles	12	25	108%
Driver Hours	19,176	23,449	22%

General Data	2002	2003	% Change
Total Passengers Served (UPHC)	1,213	1,621	34%
Complaints	13	21	62%
Commendations	7	14	100%
Passenger No-Shows	1,003	885	-12%
Unmet Trip Request	1,124	1,682	50%

Passenger Trip Information

By Type of Service	2002	2003	% Change
Fixed Route	0	0	NA
Deviated Fixed Route	3,392	903	-73%
Ambulatory	18,439	29,251	59%
Non-Ambulatory	2,859	5,863	105%
Stretcher	172	434	152%
School Board Services	0	0	NA
Total Trips	24,862	36,451	47%

By Passenger Type			
<i>Elderly</i>	8,972	<i>Low Income</i>	53
<i>Disabled</i>	3,809	<i>Disab. & LI</i>	2
<i>Low Income</i>	1,095	Other	7,090
<i>Disab. & LI</i>	3,321	<i>Disabled</i>	6,524
Children	1,787	<i>Low Income</i>	2,197
<i>Disabled</i>	41	<i>Disab. & LI</i>	1,560
Total Trips	36,451		

By Trip Purpose	No. of Trips	% of Total
Medical	17,687	49%
Employment	9,438	26%
Education/Training/Daycare	2,621	7%
Nutritional	3,100	9%
Life-Sustaining/Other	3,605	10%
Total Trips	36,451	100%

By Funding Source	No. of Trips	% of Total
CTD	5,459	15%
AHCA	12,460	34%
DCF	13,278	36%
DOEA	2,349	6%
WAGES	0	0%
Other	2,905	8%
Total Trips	36,451	100%

Financial Summary

Revenues	2002	2003	% Change
CTD	115,656	169,577	47%
USDOT & FDOT	25,908	35,175	36%
DCF	54,312	89,608	65%
AHCA (Medicaid)	258,797	423,926	64%
DOH	0	0	NA
DOE (state)	0	0	NA
DOEA	10,826	10,734	-1%
DCA	0	0	NA
DLES	46,115	12,778	-72%
DJJ	0	0	NA
Other Federal Prog.	0	0	NA
Local Government	15,003	21,091	41%
Local Non-Gov't	3,018	4,495	49%
Total Revenue	\$529,635	\$767,384	45%

Expenses	2002	2003	% Change
Labor	201,722	374,338	86%
Fringe Benefits	5,921	15,030	154%
Services	17,221	27,750	61%
Materials and Supplies	34,049	103,050	203%
Utilities	10,742	17,458	63%
Casualty and Liability	43,226	88,110	104%
Taxes	9,982	14,364	44%
Purchased Transp.	0	0	NA
Leases and Rentals	38,981	31,271	-20%
Annual Depreciation	16,873	22,348	32%
Contributed Services	0	0	NA
Other Expenses	18,714	18,975	1%
Total Expenses	\$397,431	\$712,694	79%

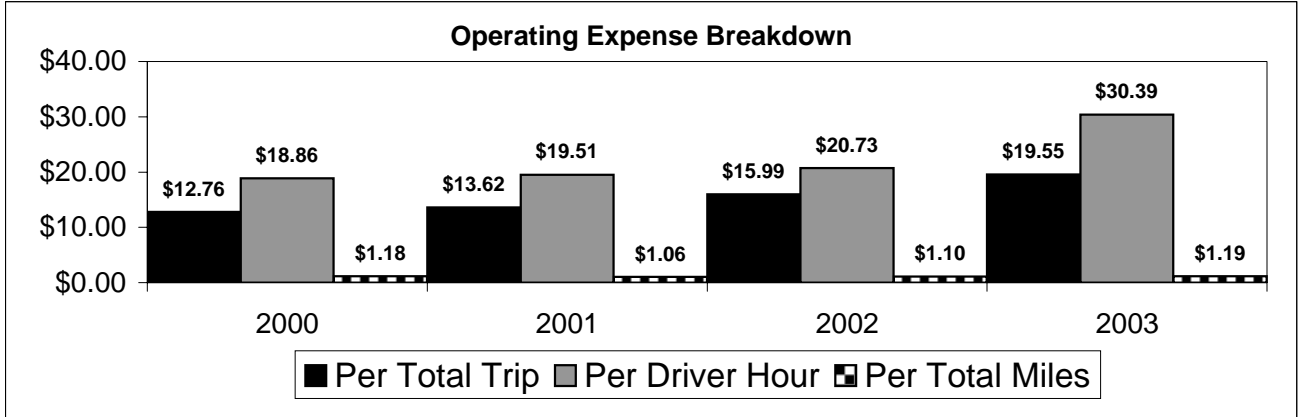
NA = Not Applicable

UPHC = Unduplicated Passenger Head Count

* = Trips the CTC was unable to provide when the passenger called for service.

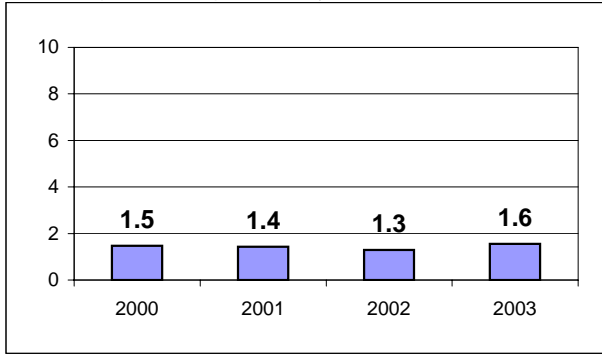
** = Refer to County Summary for explanation

Hardee County 2000-2003 Performance History



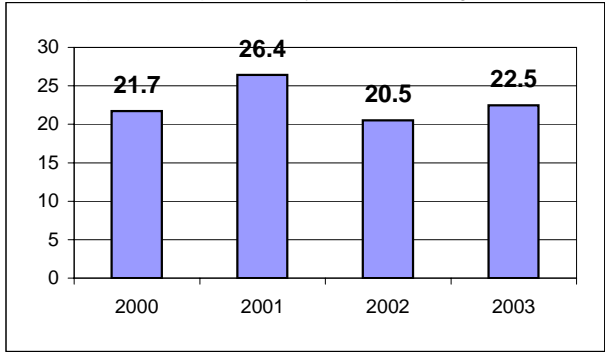
Average Trips Per Driver Hour

The paratransit trips divided by the total total driver hours.



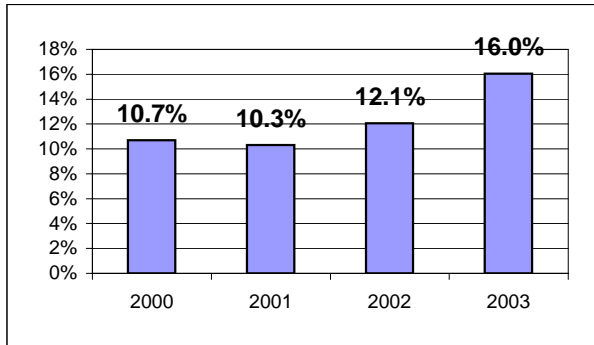
Average Trips Taken Per Paratransit Passenger

The paratransit trips divided by the total passengers served.



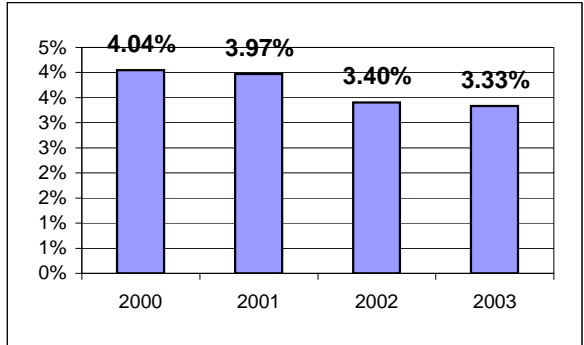
Potential TD Population Transported (%)

The total passengers served divided by the Potential TD Population.



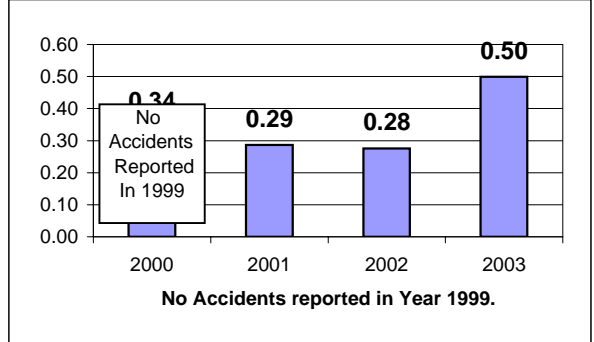
Local Funding Of System (%)

The total local revenue received divided by the total revenue.



Number Of Accidents Every 100,000 Miles

The number of accidents divided by each 100K vehicle miles traveled.



Number Of Miles Traveled Between Roadcalls

The vehicle miles traveled divided by the number of system roadcalls.

