

Gadsden County Operating Data

Service Statistics

Vehicle Data	2002	2003	% Change
Vehicle Miles	1,068,132	1,075,653	1%
Revenue Miles	824,960	904,770	10%
Roadcalls	24	28	17%
Accidents	5	23	360%
Vehicles	32	28	-13%
Driver Hours	44,153	51,762	17%

General Data	2002	2003	% Change
Total Passengers Served (UPHC)	4,418	5,304	20%
Complaints	37	16	-57%
Commendations	1	0	-100%
Passenger No-Shows	1,538	1,540	0%
Unmet Trip Request	0	0	NA

Passenger Trip Information

By Type of Service	2002	2003	% Change
Fixed Route	0	6,198	NA
Deviated Fixed Route	6,247	0	
Ambulatory	125,606	131,054	4%
Non-Ambulatory	7,226	7,996	11%
Stretcher	123	0	-100%
School Board Services	0	0	NA
Total Trips	139,202	145,248	4%

By Passenger Type			
Elderly	187	Low Income	20,310
Disabled	0	Disab. & LI	358
Low Income	17,372	Other	23,783
Disab. & LI	22,562	Disabled	835
Children	0	Low Income	25,228
Disabled	0	Disab. & LI	34,613
Total Trips	145,248		

By Trip Purpose	No. of Trips	% of Total
Medical	33,366	23%
Employment	39,595	27%
Education/Training/Daycare	68,767	47%
Nutritional	0	0%
Life-Sustaining/Other	3,520	2%
Total Trips	145,248	100%

By Funding Source	No. of Trips	% of Total
CTD	31,208	21%
AHCA	54,666	38%
DCF	26,587	18%
DOEA	0	0%
WAGES	0	0%
Other	32,787	23%
Total Trips	145,248	100%

Financial Summary

Revenues	2002	2003	% Change
CTD	179,693	243,337	35%
USDOT & FDOT	223,284	279,060	25%
DCF	159,172	228,016	43%
AHCA (Medicaid)	634,691	664,695	5%
DOH	9,116	8,049	-12%
DOE (state)	132	0	-100%
DOEA	0	0	NA
DCA	0	0	NA
DLES	8,360	14,231	70%
DJJ	0	0	NA
Other Federal Prog.	10,578	9,178	-13%
Local Government	2,370	4,833	104%
Local Non-Gov't	185,568	171,431	-8%
Total Revenue	\$1,412,964	\$1,622,830	15%

Expenses	2002	2003	% Change
Labor	673,893	784,712	16%
Fringe Benefits	307,548	320,751	4%
Services	45,236	24,752	-45%
Materials and Supplies	128,503	190,060	48%
Utilities	17,595	14,847	-16%
Casualty and Liability	75,845	84,643	12%
Taxes	813	1,230	51%
Purchased Transp.	0	0	NA
Leases and Rentals	30,536	39,070	28%
Annual Depreciation	86,697	109,631	26%
Contributed Services	0	0	NA
Other Expenses	46,298	16,855	-64%
Total Expenses	\$1,412,964	\$1,586,551	12%

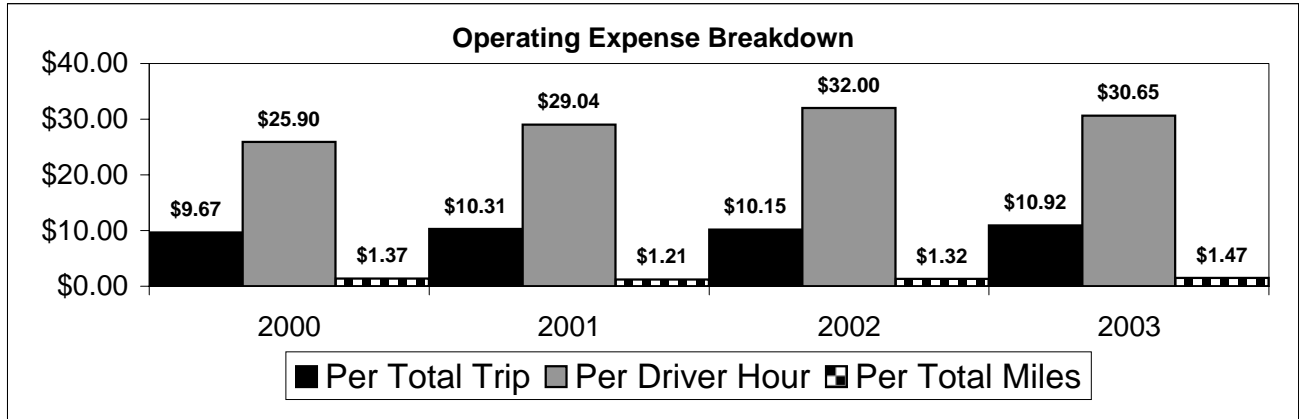
NA = Not Applicable

UPHC = Unduplicated Passenger Head Count

* = Trips the CTC was unable to provide when the passenger called for service.

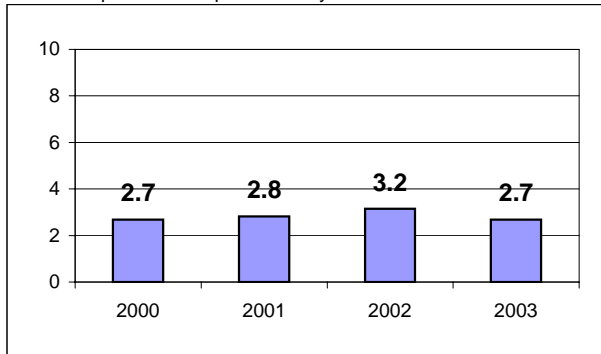
** = Refer to County Summary for explanation

Gadsden County 2000-2003 Performance History



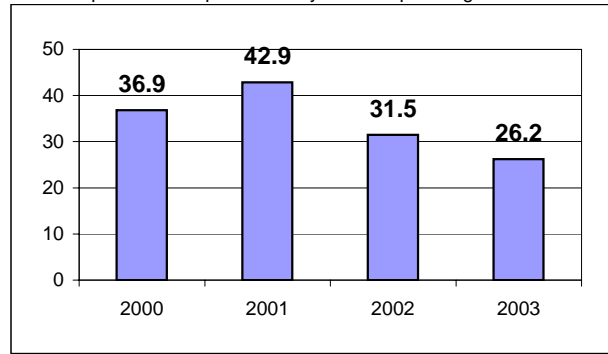
Average Trips Per Driver Hour

The paratransit trips divided by the total total driver hours.



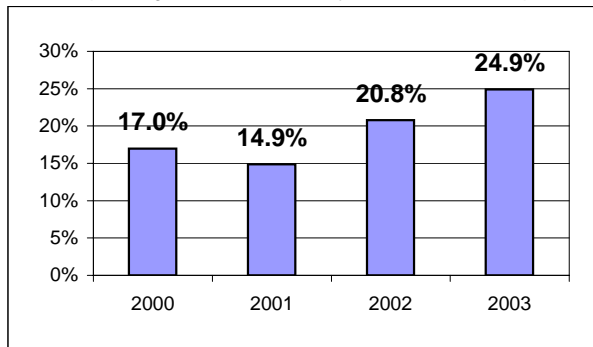
Average Trips Taken Per Paratransit Passenger

The paratransit trips divided by the total passengers served.



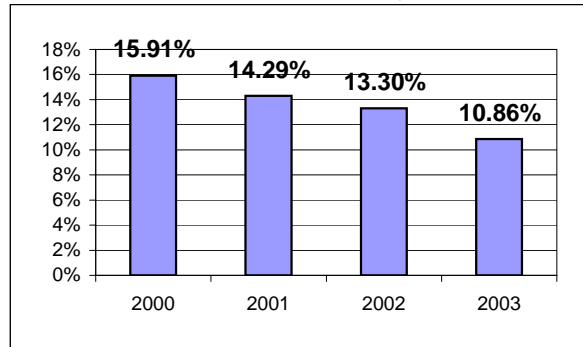
Potential TD Population Transported (%)

The total passengers served divided by the Potential TD Population.



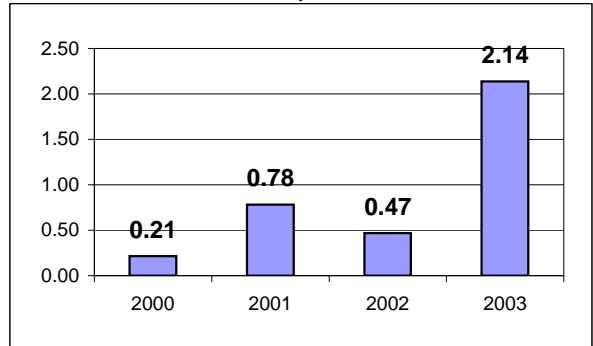
Local Funding Of System (%)

The total local revenue received divided by the total revenue.



Number Of Accidents Every 100,000 Miles

The number of accidents divided by each 100K vehicle miles traveled.



Number Of Miles Traveled Between Roadcalls

The vehicle miles traveled divided by the number of system roadcalls.

