

Columbia County Operating Data

Service Statistics

Vehicle Data	2002	2003	% Change
Vehicle Miles	575,284	637,789	11%
Revenue Miles	508,413	560,511	10%
Roadcalls	4	5	25%
Accidents	2	0	-100%
Vehicles	21	22	5%
Driver Hours	35,650	39,242	10%

General Data	2002	2003	% Change
Total Passengers Served (UPHC)	23,444	40,054	71%
Complaints	9	7	-22%
Commendations	2	0	-100%
Passenger No-Shows	58	63	9%
Unmet Trip Request	49	45	-8%

Passenger Trip Information

By Type of Service	2002	2003	% Change
Fixed Route	47,961	49,751	4%
Deviated Fixed Route	0	0	
Ambulatory	50,193	51,162	2%
Non-Ambulatory	2,130	2,273	7%
Stretcher	1,786	1,667	-7%
School Board Services	0	0	NA
Total Trips	102,070	104,853	3%

By Passenger Type			
Elderly	0	Low Income	24,117
Disabled	0	Disab. & LI	0
Low Income	19,922	Other	0
Disab. & LI	10,485	Disabled	0
Children	28,310	Low Income	22,019
Disabled	0	Disab. & LI	0
Total Trips	104,853		

By Trip Purpose	No. of Trips	% of Total
Medical	95,416	91%
Employment	2,097	2%
Education/Training/Daycare	7,340	7%
Nutritional	0	0%
Life-Sustaining/Other	0	0%
Total Trips	104,853	100%

By Funding Source	No. of Trips	% of Total
CTD	7,546	7%
AHCA	29,478	28%
DCF	18,456	18%
DOEA	0	0%
WAGES	0	0%
Other	49,373	47%
Total Trips	104,853	100%

Financial Summary

Revenues	2002	2003	% Change
CTD	195,621	250,621	28%
USDOT & FDOT	72,860	106,421	46%
DCF	53,699	0	-100%
AHCA (Medicaid)	93,416	105,748	13%
DOH	0	243	NA
DOE (state)	0	0	NA
DOEA	0	0	NA
DCA	0	0	NA
DLES	0	0	NA
DJJ	0	0	NA
Other Federal Prog.	0	0	NA
Local Government	28,323	28,323	0%
Local Non-Gov't	54,172	57,391	6%
Total Revenue	\$498,091	\$548,747	10%

Expenses	2002	2003	% Change
Labor	217,120	223,492	3%
Fringe Benefits	130,539	135,253	4%
Services	2,714	3,125	15%
Materials and Supplies	23,016	25,123	9%
Utilities	17,207	19,428	13%
Casualty and Liability	36,254	43,217	19%
Taxes	0	0	NA
Purchased Transp.	61,262	63,472	4%
Leases and Rentals	3,029	3,245	7%
Annual Depreciation	0	0	NA
Contributed Services	12,275	12,275	0%
Other Expenses	0	0	NA
Total Expenses	\$503,416	\$528,630	5%

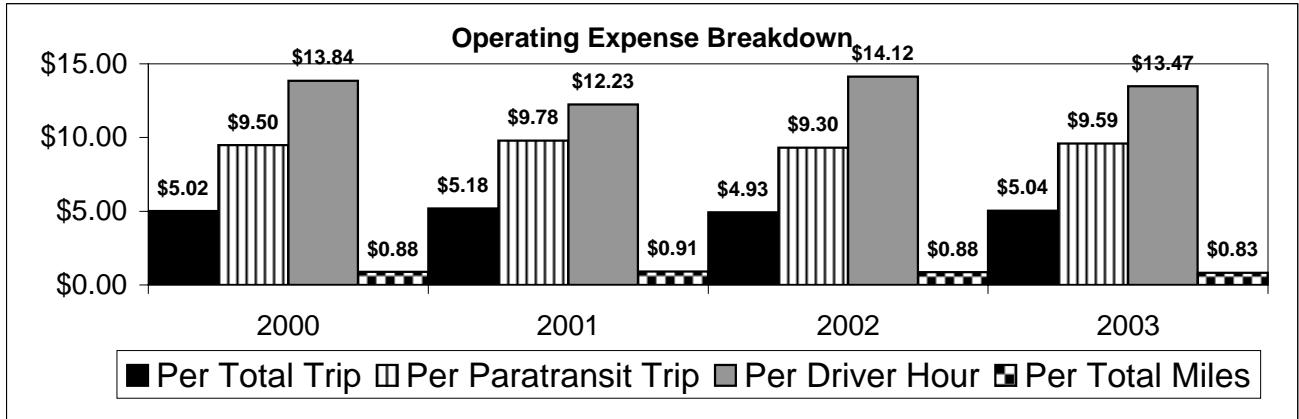
NA = Not Applicable

UPHC = Unduplicated Passenger Head Count

* = Trips the CTC was unable to provide when the passenger called for service.

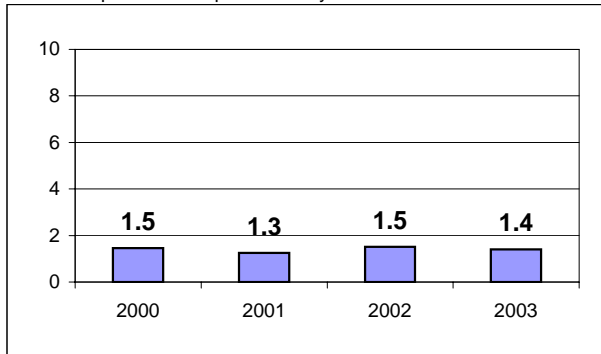
** = Refer to County Summary for explanation

Columbia County 2000-2003 Performance History



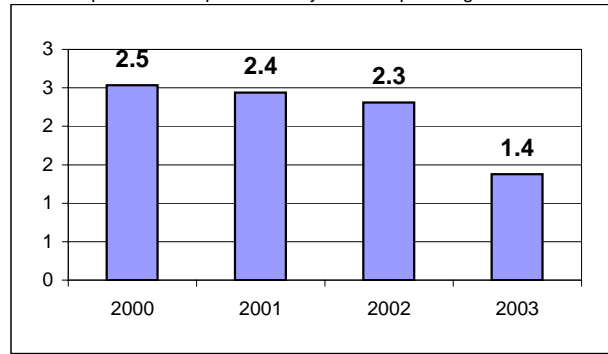
Average Trips Per Driver Hour

The paratransit trips divided by the total total driver hours.



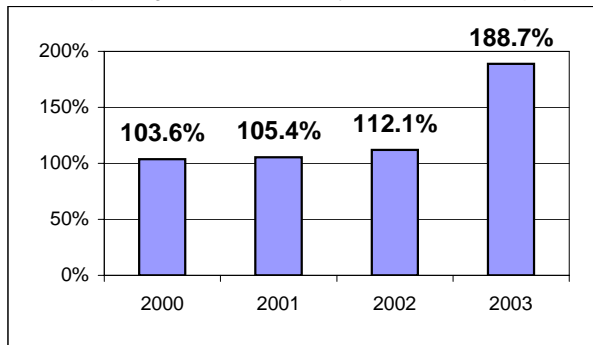
Average Trips Taken Per Paratransit Passenger

The paratransit trips divided by the total passengers served.



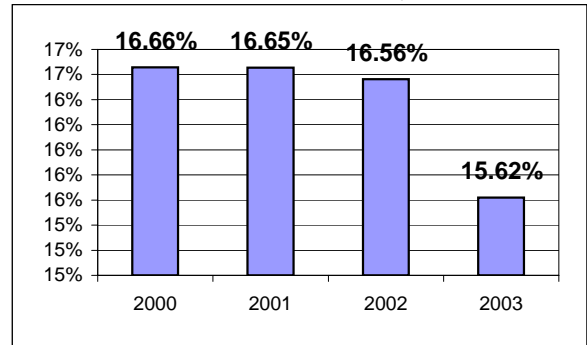
Potential TD Population Transported (%)

The total passengers served divided by the Potential TD Population.



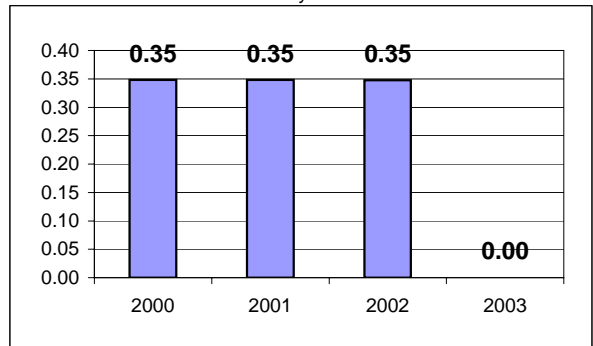
Local Funding Of System (%)

The total local revenue received divided by the total revenue.



Number Of Accidents Every 100,000 Miles

The number of accidents divided by each 100K vehicle miles traveled.



Number Of Miles Traveled Between Roadcalls

The vehicle miles traveled divided by the number of system roadcalls.

