

# Bradford County Operating Data

## Service Statistics

Vehicle Data	2002	2003	% Change
Vehicle Miles	235,370	253,210	8%
Revenue Miles	198,329	210,650	6%
Roadcalls	0	0	NA
Accidents	0	0	NA
Vehicles	14	14	0%
Driver Hours	19,228	19,340	1%

General Data	2002	2003	% Change
Total Passengers Served (UPHC)	736	684	-7%
Complaints	4	4	0%
Commendations	1	0	-100%
Passenger No-Shows	42	46	10%
Unmet Trip Request	15	21	40%

## Passenger Trip Information

By Type of Service	2002	2003	% Change
Fixed Route	0	0	NA
Deviated Fixed Route	0	0	NA
Ambulatory	38,600	36,615	-5%
Non-Ambulatory	3,590	3,120	-13%
Stretcher	79	110	39%
School Board Services	965	0	-100%
<b>Total Trips</b>	<b>43,234</b>	<b>39,845</b>	<b>-8%</b>

By Passenger Type	2002	2003	% Change
Elderly	0	200	Low Income
Disabled	797	0	Disab. & LI
Low Income	10,758	0	Other
Disab. & LI	1,394	17,930	Disabled
Children	0	5,976	Low Income
Disabled	398	2,392	Disab. & LI
<b>Total Trips</b>	<b>39,845</b>	<b>39,845</b>	

By Trip Purpose	No. of Trips	% of Total
Medical	11,720	29%
Employment	0	0%
Education/Training/Daycare	20,994	53%
Nutritional	7,131	18%
Life-Sustaining/Other	0	0%
<b>Total Trips</b>	<b>39,845</b>	<b>100%</b>

By Funding Source	No. of Trips	% of Total
CTD	5,451	14%
AHCA	6,580	17%
DCF	20,994	53%
DOEA	3,294	8%
WAGES	0	0%
Other	3,526	9%
<b>Total Trips</b>	<b>39,845</b>	<b>100%</b>

## Financial Summary

Revenues	2002	2003	% Change
CTD	56,991	122,727	115%
USDOT & FDOT	43,747	84,589	93%
DCF	110,774	90,311	-18%
AHCA (Medicaid)	122,090	128,568	5%
DOH	0	0	NA
DOE (state)	0	0	NA
DOEA	20,900	16,978	-19%
DCA	3,303	0	-100%
DLES	0	0	NA
DJJ	0	0	NA
Other Federal Prog.	0	0	NA
Local Government	9,688	6,285	-35%
Local Non-Gov't	6,337	14,356	127%
<b>Total Revenue</b>	<b>\$373,831</b>	<b>\$463,814</b>	<b>24%</b>

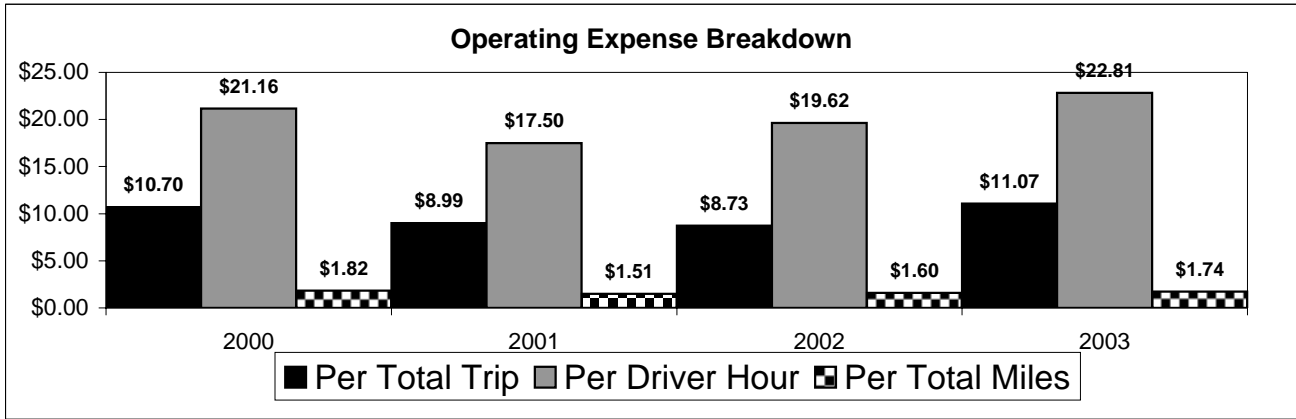
Expenses	2002	2003	% Change
Labor	93,796	105,919	13%
Fringe Benefits	30,583	32,805	7%
Services	11,036	13,754	25%
Materials and Supplies	18,561	20,719	12%
Utilities	6,604	6,948	5%
Casualty and Liability	12,412	14,989	21%
Taxes	232	69	-70%
Purchased Transp.	158,707	179,409	13%
Leases and Rentals	3,129	3,131	0%
Annual Depreciation	20,529	26,395	29%
Contributed Services	6,337	13,637	115%
Other Expenses	15,398	23,411	52%
<b>Total Expenses</b>	<b>\$377,324</b>	<b>\$441,186</b>	<b>17%</b>

\* = Trips the CTC was unable to provide when the passenger called for service.

NA = Not Applicable

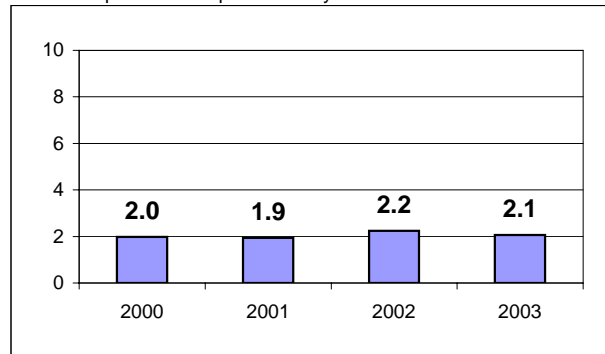
UPHC = Unduplicated Passenger Head Count

# Bradford County 2000-2003 Performance History



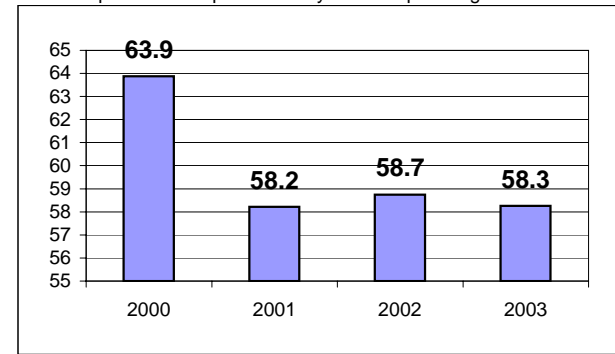
### Average Trips Per Driver Hour

The paratransit trips divided by the total total driver hours.



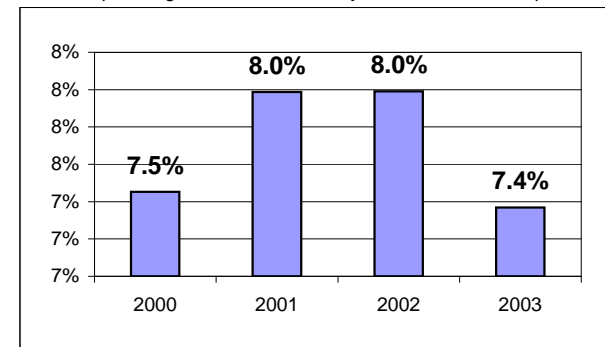
### Average Trips Taken Per Paratransit Passenger

The paratransit trips divided by the total passengers served.



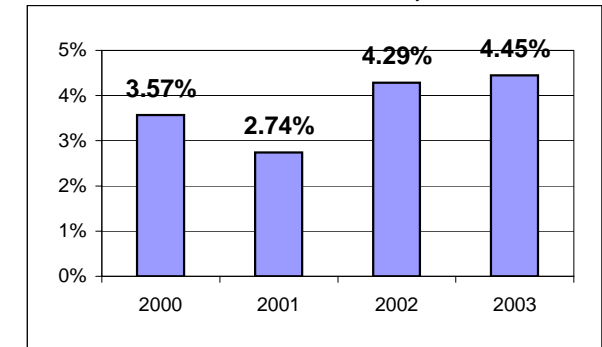
### Potential TD Population Transported (%)

The total passengers served divided by the Potential TD Population.



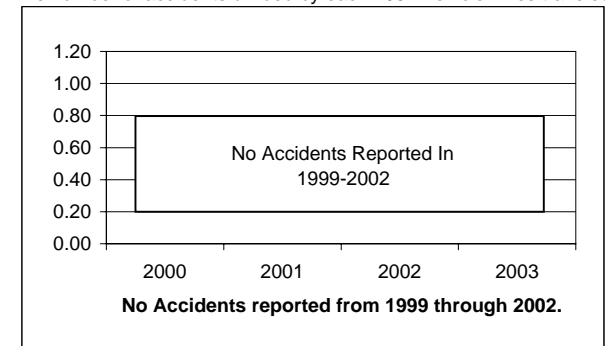
### Local Funding Of System (%)

The total local revenue received divided by the total revenue.



### Number Of Accidents Every 100,000 Miles

The number of accidents divided by each 100K vehicle miles traveled.



### Number Of Miles Traveled Between Roadcalls

The vehicle miles traveled divided by the number of system roadcalls.

