



# Producer Price Index (PPI) and FDOT Fuel & Bit Index Charts



# Producer Price Index (PPI)

- What is the PPI?



# Producer Price Index (PPI)

- Proposed
  - Data provided by the U.S. Department of Labor
    - Highway and Street Construction





## Find It!

### Topics

- [Wages](#)
- [Health Plans & Benefits](#)
- [Unemployment Insurance](#)
- [More...](#)

### Audiences

- [Workers](#)
- [Employers](#)
- [Job Seekers](#)
- [More...](#)

### Top 20 Items

- [Occupational Outlook Handbook](#)
- [Family and Medical Leave Act \(FMLA\)](#)
- [More...](#)

### Forms

### [Services By Location](#)

### Jobs

### Agencies

- [BLS](#)
- [ESA](#)
- [ETA](#)
- [Job Corps](#)
- [OSHA](#)
- [More...](#)

## In Focus

### President Bush Meets with Economic Team at Camp David

**Camp David, Md., August 18** — President George W. Bush was joined by his economic team, including [U.S. Secretary of Labor Elaine L. Chao](#), at Camp David where he talked about the gains of the economy. "Since August 2003, we have added more than 5.5 million new jobs. The unemployment rate is 4.8 percent. Behind the numbers are stories of hard-working Americans who are realizing their dreams."



[Event photo details...](#)

- Read the [President's remarks](#).
- [In Focus Archive](#)
- [Subscribe to In Focus Updates](#)

## Highlights

- [DOL Issues President's Management Agenda 2006 Report to Employees](#)
- [DOL Releases Draft Strategic Plan for Fiscal Years 2006-2011](#)
- [DOL Issues Summer 2006 Issue of \*The Labor Advocate\*](#)
- [DOL and OPM Issue Asian Pacific American \(APA\) Career Guide](#)
- [PandemicFlu.gov Offers Information for Workers on Pandemic Flu and Avian Influenza](#)
- [Final USERRA Regulations](#)
- [Information for Military Reservists Called to Active Duty \(USERRA\)](#)

### [Compliance Assistance](#)

- [eLaws — Employment Law Advisors](#)

### [Freedom of Information Act \(FOIA\)](#)

### [Subscribe to E-mail Updates](#)

### [Administration's Pension Reform Proposal](#)

### [Overtime Security](#)

### [21st Century Workforce Initiative](#)

### [Faith-Based & Community Initiative Grant Announcements](#)

### [Secretary's Speeches & Testimonies](#)

### [Newsroom](#)

### [Events Calendar](#)

### [Doing Business With DOL](#)

### [Research Library](#)

"Getting people back to work is what this



**"Hurricane Katrina: A Special Issue of the Monthly Labor Review"**

**Inflation & Consumer Spending**

[Consumer Price Index](#) • [Inflation Calculator](#) • [Contract Escalation](#) • [Producer Price Indexes](#) • [Import/Export Price Indexes](#) • [Consumer Expenditures](#) • [Price Index Research](#)

**Wages, Earnings, & Benefits**

[Wages by Area and Occupation](#) • [Earnings by Industry](#) • [Employee Benefits](#) • [Employment Costs](#) • [State and County Wages](#) • [National Compensation Data](#) • [Collective Bargaining](#) • [Wage Calculator](#)

**Productivity**

[Productivity and Costs](#) • [Multifactor Productivity](#) • [International Comparisons](#)

**Safety & Health**

[Injuries and Illnesses](#) • [Fatalities](#) • [Incidence Rate Calculator](#) • [Profiles](#)

**International**

[Import/Export Price Indexes](#) • [Foreign Labor Statistics](#) • [International Technical Cooperation](#)

**Occupations**

[Occupational Outlook Handbook](#) • [Occupational Outlook Quarterly](#) • [Employment](#) • [Wages by Area and Occupation](#) • [Injuries, Illnesses, and Fatalities](#) • [Employment Projections](#) • [Standard Occupational Classification \(SOC\)](#)

**Demographics**

[Demographic Characteristics of the Labor Force](#)



**Latest Numbers**

- CPI:**  
▲ +0.4% in Jul 2006
- Unemployment Rate:**  
▲ 4.8% in Jul 2006
- Payroll Employment:**  
▲ +113,000(p) in Jul 2006
- Average Hourly Earnings:**  
▲ +\$0.07(p) in Jul 2006
- PPI:**  
▲ +0.1%(p) in Jul 2006
- ECI:**  
▲ +0.9% in 2nd Qtr of 2006
- Productivity:**  
▲ +1.1% in 2nd Qtr of 2006
- U.S. Import Price Index:**  
▲ +0.9% in Jul 2006

-----  
 » p- preliminary  
 » Click on the ▲ icon for 10 years of historical data.  
 » [Subscribe to BLS News](#)  
 » [Publication Schedule](#)

**Employment & Unemployment**

[National Employment](#) • [National Unemployment Rate](#) • [State and Local Employment](#) • [State and Local Unemployment Rates](#) • [Mass Layoffs](#) • [Employment Projections](#) • [Job Openings and Labor Turnover](#) • [Employment by Occupation](#) • [Longitudinal Studies](#) • [State and County Employment](#) • [Time Use](#) • [Business Employment Dynamics](#) • [Employment Research](#)

**At a Glance Tables**

[U.S. Economy at a Glance](#) • [Regions, States, and Areas at a Glance](#) • [Industries at a Glance](#)

**Publications**

[Occupational Outlook Handbook](#) • [Monthly Labor Review Online](#) • [Compensation and Working Conditions Online](#) • [Occupational Outlook Quarterly](#) • [The Editor's Desk](#) • [Career Guide to Industries](#) • [Economic News Releases](#) • [More »](#)

**Research**

[Research Papers](#) • [Employment](#) • [Price Index](#) • [Survey Methods Research](#)

**Industries**

[Industries at a Glance](#) • [Employment, Hours, and Earnings](#) • [Occupations](#) • [Injuries, Illnesses, and Fatalities](#) • [Producer Price Indexes](#) • [Employment Costs](#) • [Productivity](#) • [NAICS](#)

**Business Costs**

[Producer Price Indexes](#) • [Employment Costs](#) • [Employee Benefits](#) • [Foreign Labor Costs](#)



- [Publications and Other Documentation](#)
- [Related Links](#)
- [Frequently Asked Questions](#)
- [Contact Us](#)

 [Back to Top](#)

#### GENERAL OVERVIEW:

[Data Available](#) | [Coverage](#) | [Reference Period](#) | [Source of Data](#) | [Forms of Publication](#) | [Uses of the Data](#) | [Major Research in Progress](#)

 [Back to Top](#)

#### ECONOMIC NEWS RELEASES:

##### Current

- PPI News Release ([HTML](#))([PDF](#))
- Subscribe to the [BLS News Service](#)-- receive the PPI news release by e-mail.
- [Upcoming Release Dates](#) for the rest of this calendar year.

##### Archived

- Archived [PPI](#) News Releases (1994 forward)
- [Quality Adjustment Releases for Motor Vehicles](#)

#### [How to View PDF Files](#)

 [Back to Top](#)

#### GET DETAILED PPI STATISTICS:

- **Most Requested Statistics**--Select from lists of the most popular PPI statistics.
  - [Industry Data](#)
  - [Commodity Data](#)
- **Create Customized Tables (one screen)**--this application requires a Java-enabled browser. Choose the data you want from BLS databases on a simple, one-screen form.
  - [Industry Data](#)
  - [Industry Data- Discontinued \(SIC basis\)](#)
  - [Industry Data- Discontinued \(NAICS basis\)](#)
  - [Commodity Data](#)
  - [Commodity Data - Discontinued Series](#)

**1** Select an Industry  Find

- 72112- Casino hotels
- 721120 Casino hotels
- 924126 Premiums for property and casualty insurance
- BBLD-- Non-residential buildings
- BCON-- Inputs to construction industries
- BHVV-- Other heavy construction
- BHWY-- Highway and street construction**
- BMNR-- Non-residential
- BMRP-- Maintenance and repair construction
- BMRS-- Residential
- BNEW-- New construction
- BRS1-- Single-unit residential
- BRSM-- Multi-unit residential
- OMFG-- Total manufacturing industries
- OMIN-- Total mining industries

**2** Select one or more Products  Find

- BHWY--BHWY-- Highway and street construction**

**3**  

OR for Multiple Queries

Your Selection: (0 series selected) NOTE: Select a maximum of 200 series.



Change Output Options:

From:  To:

include graphs **NEW!**

[More Formatting Options](#)

Data extracted on: August 31, 2006 (8:40:58 AM)

### Producer Price Index Industry Data

**Series Id:** PCUBHWY--BHWY--  
**Industry:** Highway and street construction  
**Product:** Highway and street construction  
**Base Date:** 8606

Year	Jan	Feb	Mar	Apr	May	Jun	Jul	Aug	Sep	Oct	Nov	Dec	Annual
1996	119.9	119.8	120.6	122.0	122.6	122.0	122.0	122.3	123.0	123.5	123.8	124.0	122.1
1997	124.6	124.7	124.2	124.3	124.5	124.4	124.2	124.9	125.0	124.9	124.9	124.3	124.6
1998	123.8	123.4	123.0	123.6	124.0	123.9	124.0	123.4	123.6	123.6	123.3	122.3	123.5
1999	122.8	122.6	123.3	125.4	125.9	126.0	126.9	128.1	129.0	128.8	129.6	130.7	126.6
2000	132.0	134.0	136.0	135.6	135.8	137.6	137.1	136.6	138.9	138.5	138.4	137.3	136.5
2001	137.8	138.2	137.4	138.5	139.9	138.8	136.6	137.0	138.4	135.4	134.1	132.4	137.0
2002	132.9	132.4	132.7	133.3	133.8	133.9	134.1	134.2	134.4	134.4	133.9	133.7	133.7
2003	134.7	135.7	136.8	137.1	137.0	136.9	136.7	136.9	136.8	136.7	137.1	137.2	136.6
2004	140.5	141.2	142.5	145.2	147.9	147.0	149.2	150.5	151.8	155.5	155.4	152.0	148.2
2005	154.3	156.5	160.4	162.9	162.4	163.7	167.6	170.0	176.1	180.8	173.1	173.4	166.8
2006	177.5	175.9	179.4	185.2(P)	188.3(P)	190.2(P)	191.9(P)						

P : Preliminary. All indexes are subject to revision four months after original publication.

# Producer Price Index (PPI)

- Components
  - Highway and Street Construction
    - Relative Importance



## Relative Importance

BHWY	Highway and street construction	100.0000
324110	Petroleum refineries	20.2236
327320	Ready-mixed concrete mfg. and dist	11.3126
324122	Asphalt shingle & coating materials mfg	8.2494
324121	Asphalt paving mixture & block mfg	5.5804
332312	Fabricated structural metal manufacturing	4.9896
212312	Crushed & broken limestone mining & quarrying	4.5795
327390	Other concrete product manufacturing	3.9228
332322	Sheet metal work mfg	3.1772
326199	All other plastics product manufacturing	3.0248
334290	Other communications equipment mfg	2.0934
325510	Paint and coating manufacturing	2.0755
221210	Natural gas distribution	2.0643
327332	Concrete pipe manufacturing	1.7821
212321	Construction sand and gravel mining	1.7294
212313	Crushed & broken granite mining & quarrying	1.6295
327999	Other miscellaneous nonmetallic mineral product mfg	1.5564
212319	Other crushed and broken stone mining and quarrying	1.3189
221122	Electric power distribution	1.1102
339950	Sign mfg	1.0944
326122	Plastics pipe & pipe fitting mfg	1.0826
332323	Ornamental and architectural metal work manufacturing	0.9289
327310	Cement manufacturing	0.8122
324191	Petroleum lubricating oils and greases	0.6459
332321	Metal window and door manufacturing	0.5443
326121	Unlaminated plastics profile shapes	0.5204
221110	Electric power generation	0.5171
335122	Commercial electric lighting fixture mfg	0.4795
331222	Steel wire drawing	0.4743
321114	Wood preservation	0.4632
332911	Industrial valve mfg	0.4574
332710	Machine shops	0.4528
321992	Prefabricated wood building mfg	0.4329
325520	Adhesive manufacturing	0.3732
332912	Fluid power valve & hose fitting mfg	0.3669
332311	Prefabricated metal building and component manufacturing	0.3371
335129	Other lighting equipment mfg	0.3256
212391	Potash, soda, and borate mineral mining	0.3246
212324	Kaolin and ball clay mining	0.3209
335929	Other communication and energy wire mfg	0.3132
325920	Explosives manufacturing	0.2631
332812	Metal coating, engraving, & allied services	0.2610
327331	Concrete block and brick manufacturing	0.2542
326211	Tire manufacturing (except retreading)	0.2388
335121	Residential electric lighting fixture mfg	0.2339
212325	Clay and ceramic and refractory minerals mining	0.2294
212322	Industrial sand mining	0.2185
332813	Electroplating/polish/anodize/coloring	0.2155
325312	Phosphatic fertilizer manufacturing	0.2089
325110	Petrochemical manufacturing	0.2056

Showing the  
33 items that  
contribute to  
90% of most  
important  
items

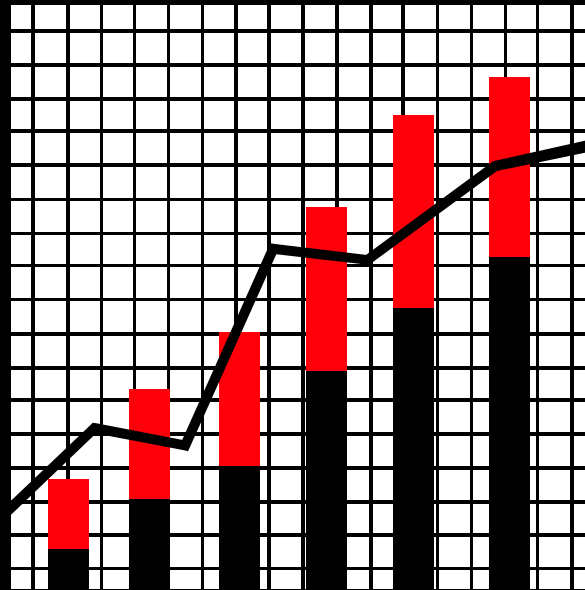
# Producer Price Index (PPI)

- Relative Importance
  - Example:
  - For Petroleum Refineries (item): Contributed 20.2236 %
  - For Ready Mixed Concrete mfg. & dist. (Item): Contributed 11.3126 %
  - Asphalt Shingle & Coating mat. Mfg. (item) + Asphalt paving mixture & block mfg.: contributed 13.8298 %

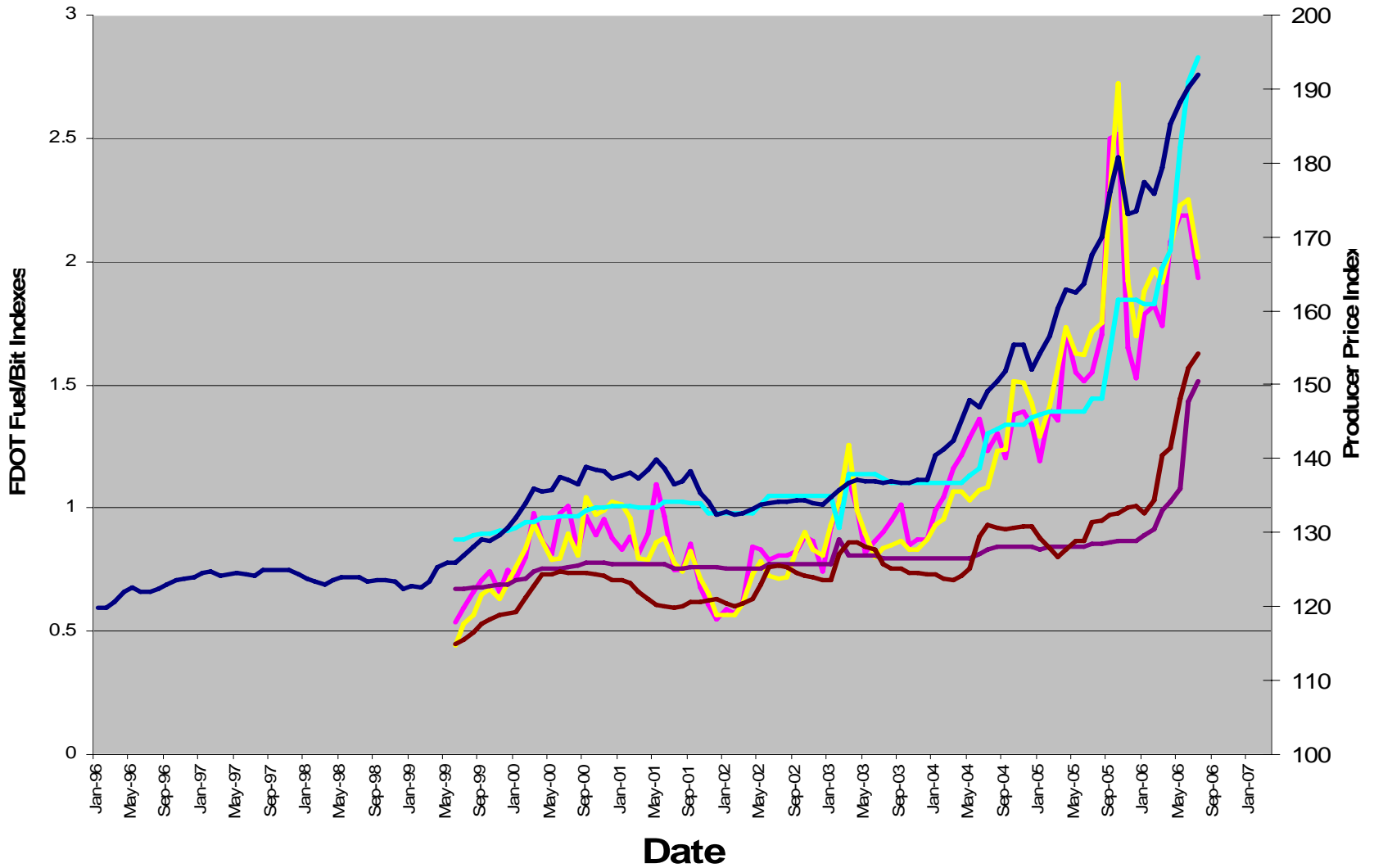
# Comparison

- PPI Indexes

versus  
FDOT Fuel & Bit Indexes

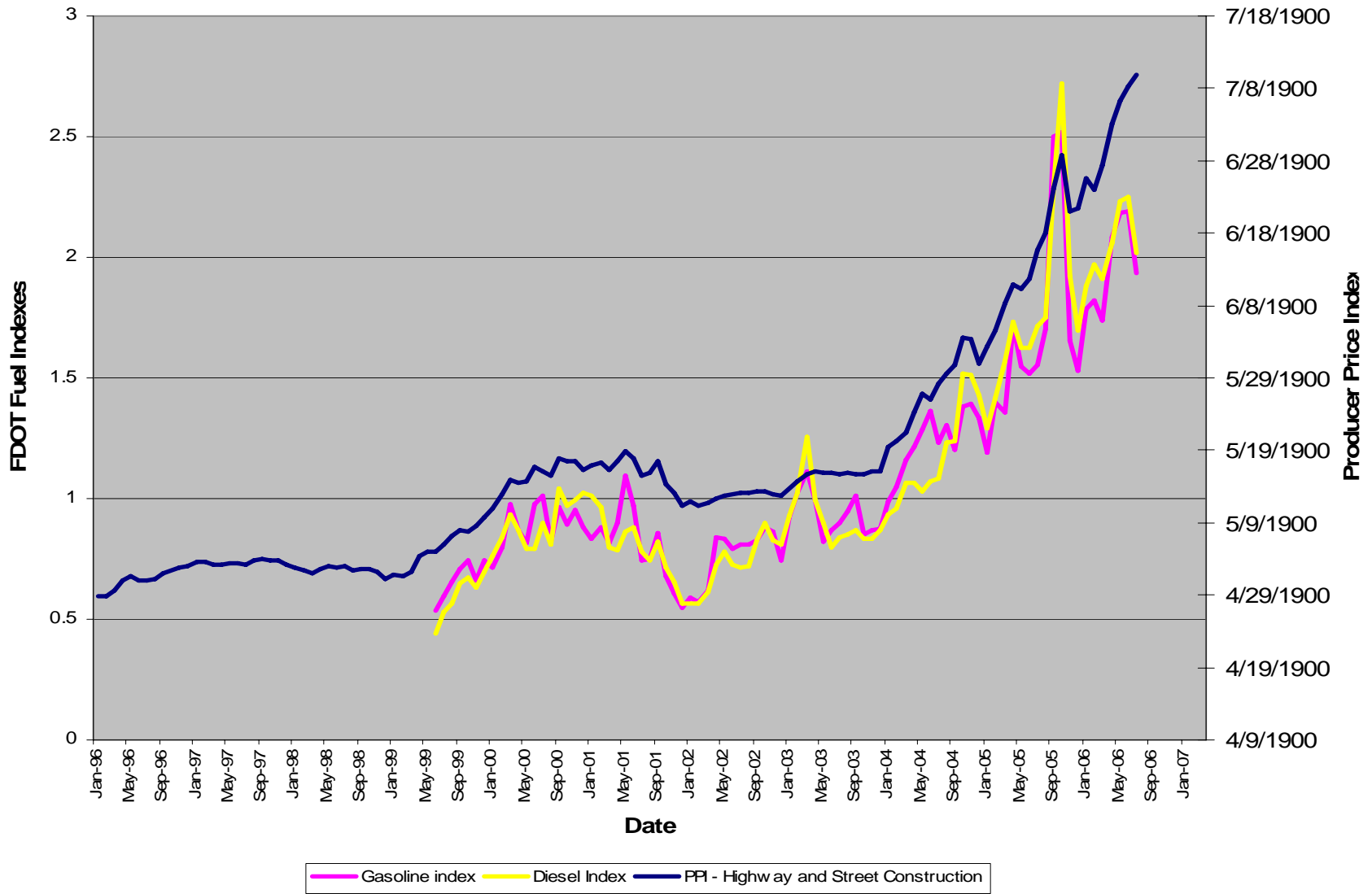


### Index - PPI w/ Fuel/Bit indexes

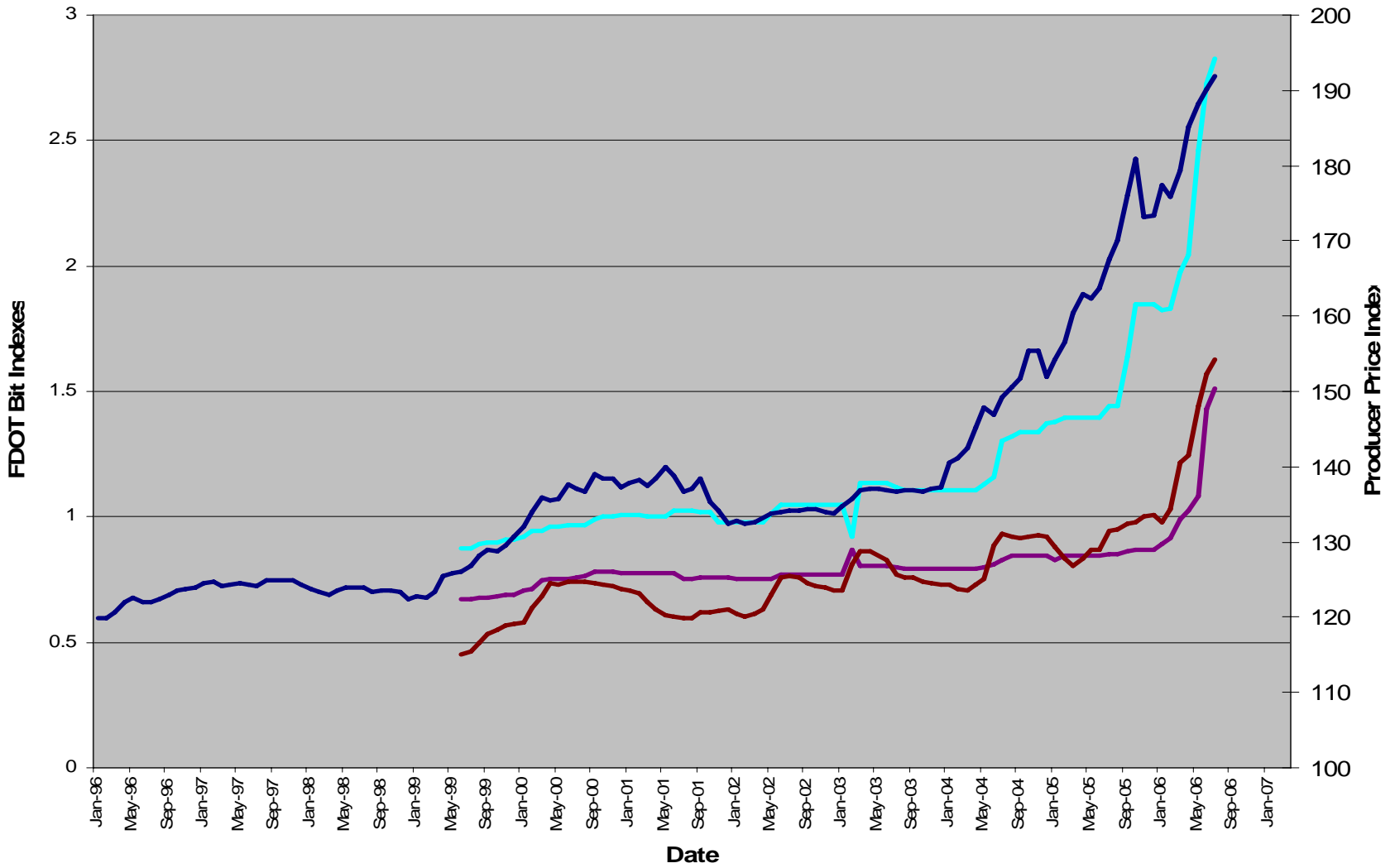


Gasoline index Diesel Index RC 70 index RS1/RS2 index AC 20/30 index PPI - Highway and Street Construction

# Index - PPI w/ Fuel indexes



### Index - PPI w/ Bit indexes



RC 70 index    RS1/RS2 index    AC 20/30 index    PPI - Highway and Street Construction

# Comparison :

## PPI Indexes versus FDOT Indexes

- Three Completed Projects
  - PPI Applied to Regular Work
  - PPI Applied to Asphalt Only Items
  - Current Fuel & Bit. Items on DOT list

Fin #40900615201  
 Base PPI = 145.2  
 Contract Let - 04/28/04  
 Job Completed - 4/23/06  
 Contract Amount \$5,309,754.66

Contract No. T3055  
 Milling & Resurfacing/Rdway Widening & G-drail

CPPI = Current Producer Product Index  
 BPPI = Base Producer Product Index

Formula = (CPPI - BPPI) ÷ BPPI = Index Difference

Est. No.	Date	CPPI	Regular Work Asphalt only items	Dot-Base Index Difference			Asphalt only items Bit CPPI	Overall Contract PPI
				1.2170 Current Gas	1.0661 Current Diesel	0.7272 Current Bit		
1	15-Aug-04	150.5	\$22,415.06 x 0.0365	\$1.47	\$116.75			\$818.15
2	3-Oct-04	155.5	\$11,618.76 x 0.0709		\$8.90			\$114.27
3	17-Oct-04	155.5	\$515.06 x 0.0709	\$0.10	\$9.90			\$36.52
4	14-Nov-04	155.4	\$1,030.12 x 0.0702	\$0.34	\$19.57			\$72.31
5	19-Dec-04	152	\$1,226.27 x 0.0468	\$0.17	\$15.47			\$57.39
6	16-Jan-05	154.3	\$18,049.16 x 0.0627		\$140.21			\$1,131.68
7	20-Feb-05	156.5	\$18,852.35 x 0.0778	\$5.40	\$250.96			\$1,466.71
8	20-Mar-05	160.4	\$46,863.87 x 0.1047	\$8.75	\$949.89			\$4,906.65
9	17-Apr-05	162.9	\$1,188,636.69 x 0.1219 747214.71 x 0.1219	\$1,246.70	\$32,712.86	\$17,517.28	\$91,085.47	\$144,894.81
10	15-May-05	162.4	\$622,475.32 x 0.1185 \$376,377.99 x 0.1185	\$399.09	\$14,169.91	\$12,767.39	\$44,600.79	\$73,763.33
11	12-Jun-05	163.7	\$179,073.34 x 0.1274	\$110.76	\$4,403.90			\$22,813.94
12	17-Jul-05	167.6	\$211,909.16 x 0.1543	\$137.57	\$5,679.35			\$32,697.58
13	14-Aug-05	170.0	\$97,569.76 x 0.1708	\$97.85	\$2,764.55			\$16,664.92
14	18-Sep-05	176.1	\$34,052.22 x 0.2128 \$2,829.03 x 0.2128	\$98.86	\$1,799.31		\$602.02	\$7,246.31
15	16-Oct-05	180.8	\$12,902.41 x 0.2452 \$1,931.04 x 0.2452	\$37.14	\$914.34		\$473.49	\$3,163.67
16	13-Nov-05	173.1	\$11,127.00 x 0.1921	\$9.75	\$398.09			\$2,137.50
17	11-Dec-05	173.4	\$68,266.70 x 0.1942	\$40.44	\$1,763.17			\$13,257.39
18	15-Jan-06	177.5	\$151,144.39 x 0.2225	\$192.10	\$5,448.06			\$33,629.63
19	19-Feb-06	175.4	\$96,373.74 x 0.2080 \$2,245.95 x 0.2080	\$123.84	\$3,666.43	\$199.04	\$467.16	\$20,045.74
20	19-Mar-06	179.4	\$473,930.65 x 0.2355	\$518.85	\$16,883.36			\$111,610.66
21	16-Apr-06	185.2	\$968,790.52 x 0.2755 \$787,050.21 x 0.2755	\$1,850.10	\$40,764.10	\$103,190.66	\$216,832.33	\$266,901.78
22	21-May-06	188.3	\$966,797.76 x 0.2968 \$565,556.83 x 0.2968	\$2,083.85	\$48,126.44	\$101,228.68	\$167,857.27	\$286,945.58
23	18-Jan-06	188.3	\$129,067.21 x 0.2968	\$278.52	\$6,529.09			\$38,307.15
24	27-Jan-06	188.3	\$88,534.64 x 0.2968 \$-47,408.39 x 0.2968	\$137.51	\$4,534.66	-17,870.83	(\$14,070.81)	\$26,277.08
<b>Totals</b>				\$7,379.16	\$192,069.27	\$217,032.22	\$507,810.08	\$1,108,960.75

Total Contract Fuel & Bit = \$416,480.65  
 Asphalt only item Bit PPI = \$507,810.88  
 Overall Contract PPI = \$1,108,898.50

- Example:
- Contract T3055

**Formula = (CPPI - BPPI) ÷ BPPI = Index Difference**

**Dot-Base Index Difference**

**1.2170**

**1.0661**

**0.7272**

\$36.52

4	14-Nov-04	155.4	\$1,030.12 x 0.0702	\$0.34	\$19.57			\$72.31
5	19-Dec-04	152	\$1,226.27 x 0.0468	\$0.17	\$15.47			\$57.39
6	16-Jan-05	154.3	\$18,049.16 x 0.0627		\$140.21			\$1,131.68
7	20-Feb-05	156.5	\$18,852.35 x 0.0778	\$5.40	\$250.96			\$1,466.71
8	20-Mar-05	160.4	\$46,863.87 x 0.1047	\$8.75	\$949.89			\$4,906.65
9	17-Apr-05	162.9	\$1,188,636.69 x 0.1219 747214.71 x 0.1219	\$1,246.70	\$32,712.86	\$17,517.28	\$91,085.47	\$144,894.81
10	15-May-05	162.4	\$622,475.32 x 0.1185 \$376,377.99 x 0.1185	\$399.09	\$14,169.91	\$12,767.39	\$44,600.79	\$73,763.33

State Construction Office									
Fin #40900615201		Contract No. T3055		Milling and Resurfacing/Roadway Widening & Guardrail					
Base PPI = 145.2								BPPI = Base Producer Product Index	
Contract Let - 04/28/04								CPPI = Current Producer Product Index	
Job Completed - 4/23/06								Formula = (CPPI - BPPI) + BPPI = Index Difference	
Contract Amount \$5,309,									
				Dot-Base Index Difference					
				1.2170		1.0661		0.7272	
Est. No.	Date	CPPI	Regular Work Asphalt only items	Current Gasoline	Current Diesel	Current Bit	Asphalt only items Bit CPPI	Overall Contract PPI	
1	15-Aug-04	150.5	\$22,415.06 x 0.0365						\$118.22
2	3-Oct-04	155.5	\$11,016.76 x 0.0709						\$818.15
3	17-Oct-04	155.5	\$515.06 x 0.0709	\$0.10	\$9.90				\$36.52
4	14-Nov-04	155.4	\$1,030.12 x 0.0702	\$0.34	\$19.57				\$72.31
5	19-Dec-04	152	\$1,226.27 x 0.0468	\$0.17	\$15.47				\$57.39
6	16-Jan-05	154.3	\$18,049.16 x 0.0627		\$140.21				\$1,131.68
7	20-Feb-05	156.5	\$18,852.35 x 0.0778	\$5.40	\$250.96				\$1,466.71
8	20-Mar-05	160.4	\$46,863.87 x 0.1047	\$8.75	\$949.89				\$4,906.65
9	17-Apr-05	162.9	\$1,188,636.69 x 0.1219 747214.71 x 0.1219	\$1,246.70	\$32,712.86	\$17,517.28	\$91,085.47		\$144,894.81
10	15-May-05	162.4	\$622,475.32 x 0.1185 \$376,377.99 x 0.1185	\$399.09	\$14,169.91	\$12,767.39	\$44,600.79		\$73,763.33

- Estimate No. 1
- Total paid by FDOT current indexes = \$ 118.22
- Total Paid by FDOT using new PPI = \$ 818.15

# Est. # 9

State Construction Office									
Fin #40900615201		Contract No. T3055		Milling and Resurfacing/Roadway Widening & Guardrail					
Base PPI = 145.2				BPPI = Base Producer Product Index					
Contract Let - 04/28/04				CPPI = Current Producer Product Index					
Job Completed - 4/23/06				Formula = (CPPI - BPPI) + BPPI = Index Difference					
Contract Amount \$5,309,									
				1.2170		Dot-Base Index Difference			
						1.0661		0.7272	
Est. No.	Date	CPPI	Regular Work Asphalt only items	Current Gasoline	Current Diesel	Current Bit	Asphalt only items Bit CPPI	Overall	Contract PPI
1	15-Aug-04	150.5	\$22,415.06 x 0.0365	\$1.47	\$116.75				\$818.15
2	3-Oct-04	155.5	\$11,618.76 x 0.0709		\$8.90				\$114.27
3	17-Oct-04	155.5	\$515.06 x 0.0709	\$0.10	\$9.90				\$36.52
4	14-Nov-04	155.4	\$1,030.12 x 0.0702	\$0.34	\$19.57				\$72.31
5	19-Dec-04	152	\$1,226.27 x 0.0468	\$0.17	\$15.47				\$57.39
6	16-Jan-05	154.3	\$18,049.16 x 0.0627		\$140.21				\$1,131.68
7	20-Feb-05	156.5	\$18,852.35 x 0.0778	\$5.40	\$250.96				\$1,466.71
8	20-Mar-05	160.4	\$46,863.87 x 0.1047	\$8.75	\$940.80				\$4,006.65
9	17-Apr-05	162.9	\$1,188,636.69 x 0.1219 747214.71 x 0.1219						<b>\$ 51,476.84 F &amp; B</b>
10	15-May-05	162.4	\$22,415.32 x 0.1185 \$376,377.99 x 0.1185	\$399.09	\$14,169.91	\$12,767.39	\$44,600.79		\$73,763.33

**\$ 51,476.84 F & B**    **\$ 91,085.47**    **\$144,894.81**

- Estimate No. 9
- Total paid by FDOT using current indexes = \$ 51,476.84 F&B
- Total Paid by FDOT using new PPI = \$ 144,894.81
- Only Asphalt Only Item with new PPI = \$ 91,085.47

# Project 1: Contract T3055

State Construction Office			
Fin #40900615201	Contract No. T3055	Milling and Resurfacing/Roadway Widening & Guardrail	
Base PPI = 145.2			BPPI = Base Producer Product Index
Contract Let - 04/28/04			CPPI = Current Producer Product Index
Job Completed - 4/23/06	Formula = (CPPI - BPPI) + BPPI = Index Difference		
Contract Amount \$5,309,			

				\$-47,408.39 x 0.1
<b>Totals</b>				
<b>Total Contract Fuel &amp; Bit = \$416,480.65</b>				
<b>Asphalt only item Bit PPI = \$507,810.88</b>				
<b>Overall Contract PPI = \$1,108,898.50</b>				

58

	\$7,379.16	\$192,069.27	\$217,032.22
	Gas	Diesel	Bit

- Project 2: Contract T3124

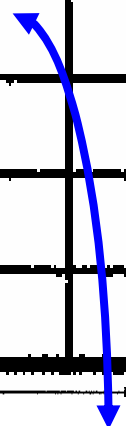
State Construction Office			
Fin #440632715201	Contract No. T3124		CPPI = Current Producer Product Index
Base PPI = 155.4	Milling and Resurfacing Project & 5' Shoulder		BPPI = Base Producer Product Index
Contract Let-11/04/04			
Job completed - 02/23/06	Formula = CPPI - BPPI + BPPI = Index Difference		

<b>Total</b>			<b>\$8,30</b>
<b>Total Contract Fuel &amp; Bit</b>	<b>=</b>	<b>\$149,851.84</b>	
<b>Asphalt only items PPI Bit</b>	<b>=</b>	<b>\$341,049.79</b>	
<b>Overall Contract PPI</b>	<b>=</b>	<b>\$728,465.40</b>	

7	15-Jan-06	177.5	\$1,017,510.27 x 0.1422	\$0.12	\$0.33		\$14,469.03																														
<table border="1"> <tbody> <tr> <td><b>\$8,302.74</b></td> <td><b>\$84,340.34</b></td> <td><b>\$57,208.76</b></td> </tr> <tr> <td>Gas</td> <td>Diesel</td> <td>Bit</td> </tr> <tr> <td>Total</td> <td>\$8,302.74</td> <td>\$84,340.34</td> <td>\$57,208.76</td> <td>\$341,049.79</td> <td>\$728,582.05</td> </tr> <tr> <td>Total Contract Fuel &amp; Bit</td> <td>=</td> <td>\$149,851.84</td> <td></td> <td></td> <td></td> </tr> <tr> <td>Asphalt only items PPI Bit</td> <td>=</td> <td>\$341,049.79</td> <td></td> <td></td> <td></td> </tr> <tr> <td>Overall Contract PPI</td> <td>=</td> <td>\$728,465.40</td> <td></td> <td></td> <td></td> </tr> </tbody> </table>								<b>\$8,302.74</b>	<b>\$84,340.34</b>	<b>\$57,208.76</b>	Gas	Diesel	Bit	Total	\$8,302.74	\$84,340.34	\$57,208.76	\$341,049.79	\$728,582.05	Total Contract Fuel & Bit	=	\$149,851.84				Asphalt only items PPI Bit	=	\$341,049.79				Overall Contract PPI	=	\$728,465.40			
<b>\$8,302.74</b>	<b>\$84,340.34</b>	<b>\$57,208.76</b>																																			
Gas	Diesel	Bit																																			
Total	\$8,302.74	\$84,340.34	\$57,208.76	\$341,049.79	\$728,582.05																																
Total Contract Fuel & Bit	=	\$149,851.84																																			
Asphalt only items PPI Bit	=	\$341,049.79																																			
Overall Contract PPI	=	\$728,465.40																																			

- Project 3: Contract T 7024

State Construction Office		
Fin #256336-1-52-01	Contract No. T7024	Contract Type = Add Lanes and Reconstruct
<b>Total Contract Fuel &amp; Bit = \$888,936.26</b>		
<b>Asphalt only Items PPI Bit = \$814,872.53</b>		
<b>Overall contract PPI = \$3,148,719.02</b>		



\$41,445.39	\$616,664.40	\$230,826.47
Gas	Diesel	Bit
Overall contract PPI = \$3,148,719.02		

# Bit Index Peek.....August 2006

State Construction Office						
Fin #21972215201		Contract No. T3154	<b>Add Lanes/Reconstruction</b>			<b>CPPI = Current Producer Product Index</b>
Base PPI = 163.7						<b>BPPI = Base Producer Product Index</b>
Contract Let - 06/22/05						
Job Completed				Formula = (CPPI - BPPI) ÷ BPPI = Index Difference		
<b>Contract Amount \$25,462,923.43</b>						
				Dot-Base Index (June 05)		
			1.5165	1.6223	0.8671	
				Dot-Current Index (August 06)		
			2.3790	2.4123	1.7218	

Curr  
Ga

A difference of

\$1

\$ 157,569.43

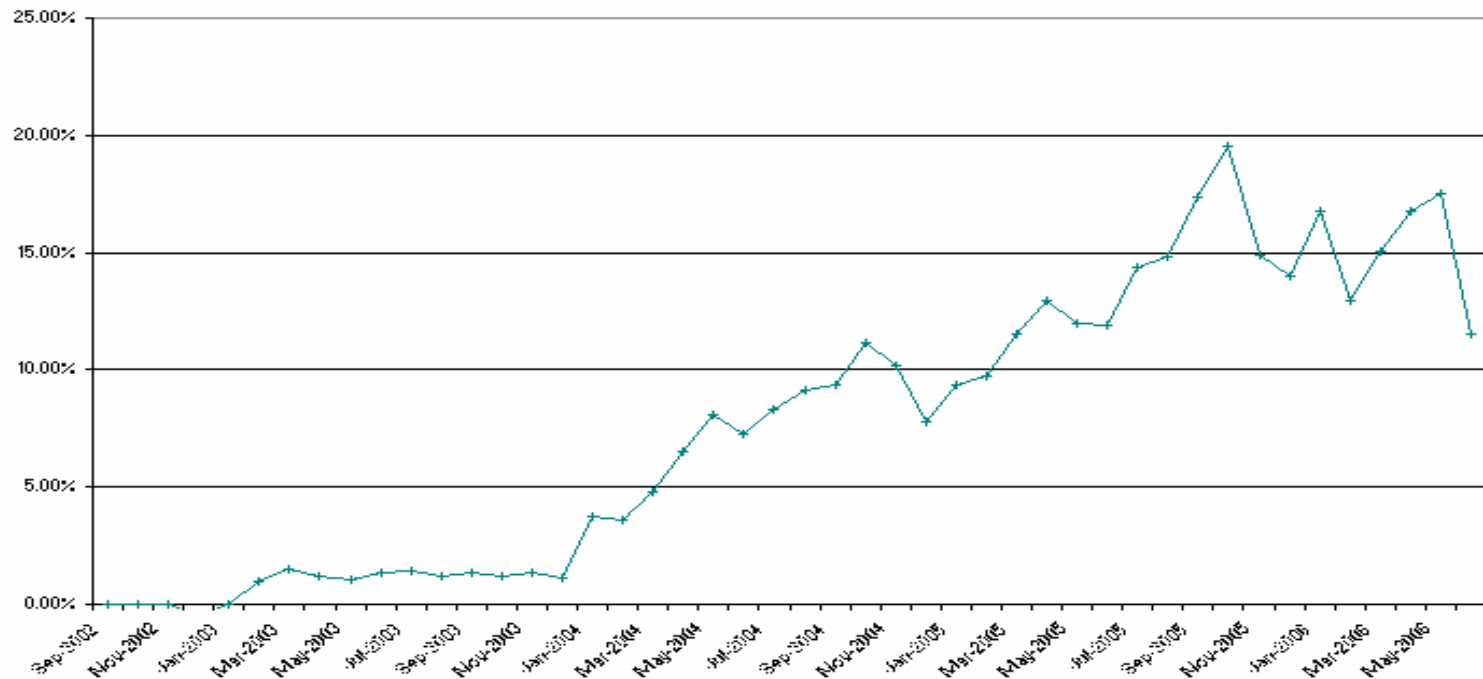
# Bit Index Peek.....August 2006

State Construction Office								
Fin #21972215201		Contract No. T3154	<b>Add Lanes/Reconstruction</b>				<b>CPPI = Current Producer Product Index</b>	
Base PPI = 163.7							<b>BPPI = Base Producer Product Index</b>	
Contract Let - 06/22/05								
Job Completed				Formula = (CPPI - BPPI) ÷ BPPI = Index Difference				
<b>Contract Amount \$25,462,923.43</b>								
					Dot-Base Index (June 05)			
				1.5165	1.6223	0.8671		
					Dot-Current Index (August 06)			
				2.3790	2.4123	1.7218		
Est. No.	Date	CPPI	Regular Work Asphalt only items	Current Gas	Current Diesel	Current Bit	Asphalt only items Bit CPPI	Overall Contract PPI
11	6-Aug-06	191.9	\$1,651,672.91 x 0.1723	\$1,993.33	\$28,303.29	\$96,717.19	\$101,811.02	\$284,583.24
<b>F</b>	<b>Gas</b>	<b>Diesel</b>	<b>Bit</b>				<b>PPI</b>	
<b>F</b>	<b>57%</b>	<b>49%</b>	<b>99%</b>				<b>17%</b>	
<b>A</b>								
<b>Overall Contract PPI = \$204,303.24</b>								

# So What's the Total Impact

B	G	H	I	J	K	L	M	N	O
PPI Date	9/1/2002	10/1/2002	11/1/2002	12/1/2002	1/1/2003	2/1/2003	3/1/2003	4/1/2003	5/1/2003
PPI Value	134.4	134.4	133.9	133.7	134.7	135.7	136.8	137.1	137
<==== Monthly Estimate Date =====>									
Row Description	Sep-2002	Oct-2002	Nov-2002	Dec-2002	Jan-2003	Feb-2003	Mar-2003	Apr-2003	May-2003
Current Paid Amount (Through May 2006)	\$ -	\$ -	\$ -	\$ 615,000	\$ -	\$ 672,779	\$ 3,645,711	\$ 8,925,266	\$ 16,396,001
Current Paid Amt - FUEL	\$ -	\$ -	\$ -	\$ -	\$ -	\$ -	\$ -	\$ 10,083	\$ 9,728
Current Paid Amt - BITM	\$ -	\$ -	\$ -	\$ -	\$ -	\$ -	\$ 19,500	\$ 81,986	\$ 170,542
Current Paid Less Fuel & BIT Adj	\$ -	\$ -	\$ -	\$ 615,000	\$ -	\$ 672,779	\$ 3,626,211	\$ 8,833,197	\$ 16,215,731
PPI Adj Amt	\$ -	\$ -	\$ -	\$ (3,203)	\$ -	\$ 6,508	\$ 74,271	\$ 198,322	\$ 348,099
Difference (PPI - Fuel & BIT	\$ -	\$ -	\$ -	\$ (3,203)	\$ -	\$ 6,508	\$ 54,771	\$ 106,253	\$ 167,829
% Change in Adj	0.00%	0.00%	0.00%	-0.52%	0.00%	0.97%	1.51%	1.20%	1.03%

PPI Effect on Monthly Estimates



# Total Impact

B	G	H	I	J
PPI_Date	9/1/2002	10/1/2002	11/1/2002	12/1/2002
PPI Value	134.4	134.4	133.9	133.7
	<===== Monthly Estimate Date =====>			
Row Description	Sep-2002	Oct-2002	Nov-2002	Dec-2002
Current Paid Amount (Through May 2006)	\$ -	\$ -	\$ -	\$ 615,000
Current Paid Amt - FUEL	\$ -	\$ -	\$ -	\$ -
Current Paid Amt - BITM	\$ -	\$ -	\$ -	\$ -
Current Paid Less Fuel & BIT Adj	\$ -	\$ -	\$ -	\$ 615,000
PPI Adj Amt	\$ -	\$ -	\$ -	\$ (3,203)
Difference (PPI - Fuel & BIT	\$ -	\$ -	\$ -	\$ (3,203)
% Change in Adj	0.00%	0.00%	0.00%	-0.52%



- Options:
- 1. PPI Only
- 2. Bit + (PPI – PPI Bit) ....{No Fuel}
- 3. No PPI: Increase Current Fuel & Bit Items + Add Adj. for PG22 Binder
- 4. No Change





*The End*